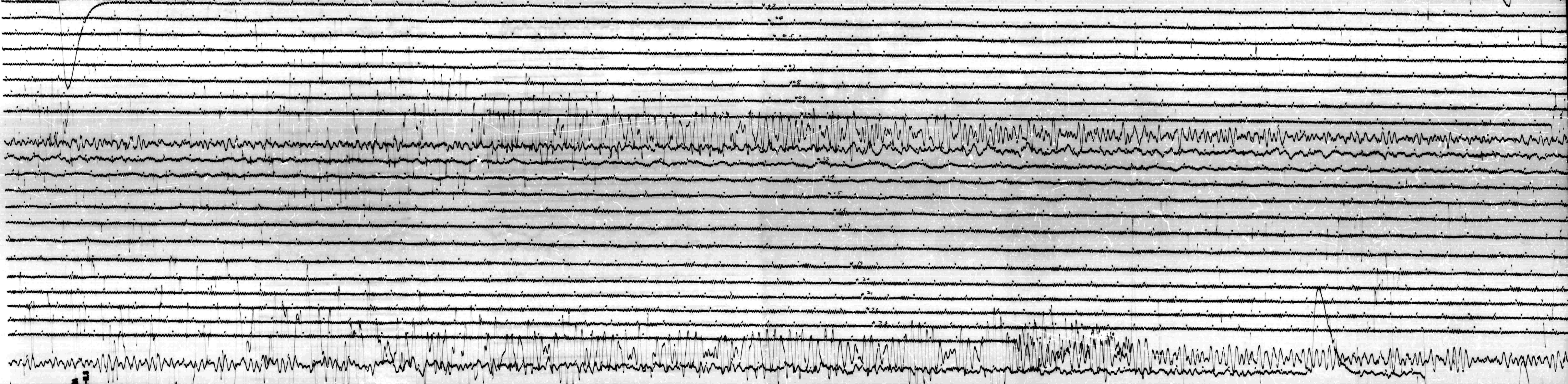


JUL 2 9 1967

STATION *N/A* COMP *2* IMG *3.000* CAL CUR *10* G *1036* M/A
 DATE ON *7-29-67* TIME *01 02 24* CORR *1/2* MS @ *0210* GMT
 DATE OFF *7-30-67* TIME *01 02 41* CORR *1/2* MS @ *0215* GMT
 To *15* Jg *100* Remarks: *not signal of time*

GRID MOT. ↑
 ↓

29
July



JUL 30 1967

10-15
 10-15