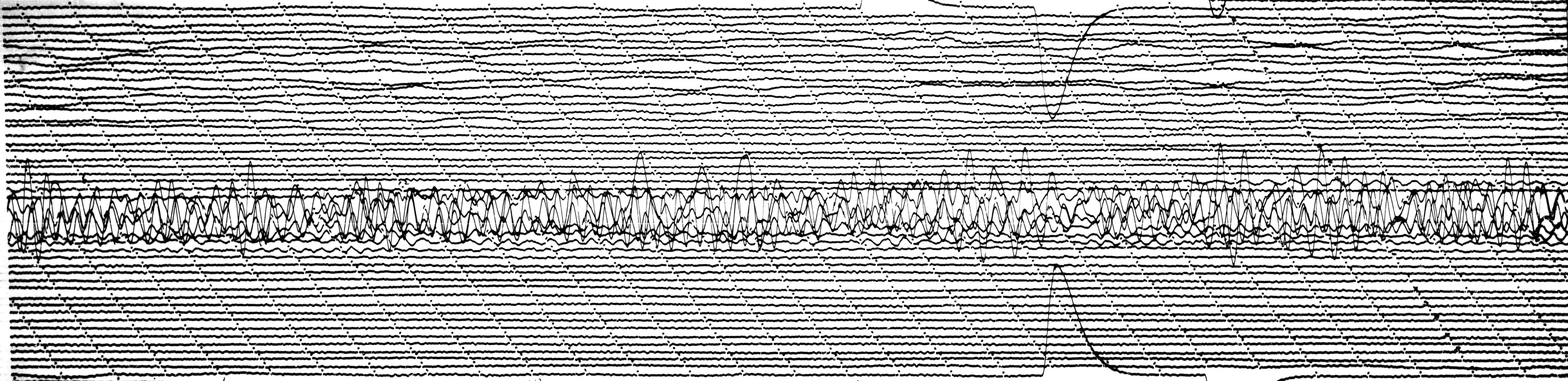


AUG 19 1966



+6

+12

+18

+24

AUG 20 1966

STATION PMG COMP 2 MAG 3.000 CAL CUR 0.1 G 105 N 21  
 DATE ON Aug 19/66 TIME ON 0030 CORR -10 / 0 MS 0530  
 DATE OFF Aug 20/66 TIME OFF 0035 CORR -10 / 0 MS 0530  
 To 15 18.00 Remarks:

