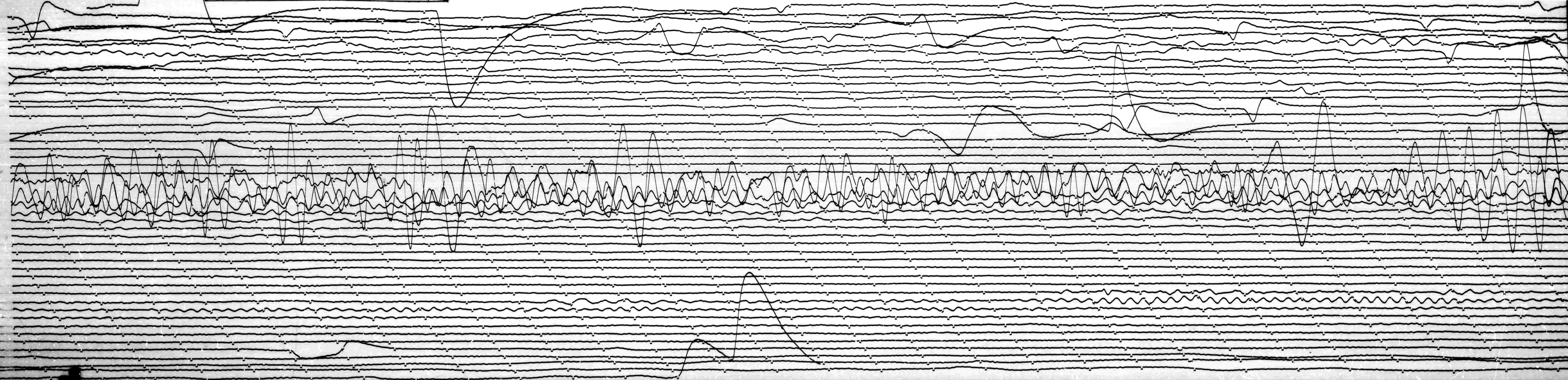


MAR 19 1966

STATION *RVI* COMP *E-W* MAG *1.520* CAL CUR *0.20* G *0.99* N/A
DATE ON *3-19-66* TIME ON *15:43* CORR *-120 / 0* MS @ *14.53* GMT
DATE OFF *3-20-66* TIME OFF *14:52* CORR *-50 / 0* MS @ *14.43* GMT
To 15 Tg 100 Remarks:

GRND MOT. ↑
↓



MAR 20 1966