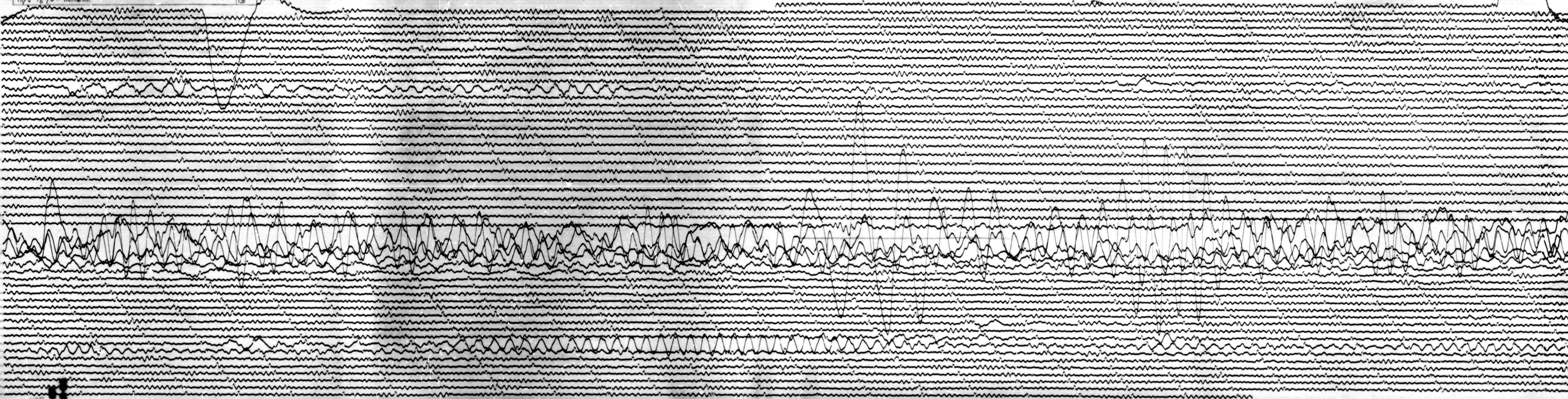


STATION *ANT COMP E* MAG *3000* CAL CUR *0.1* *00.09* TN/A
DATE *ON 3.19.66* TIME *ON 2.33* CORR *200* / OMS *12.30* GMT
DATE *OFF 3.20.66* TIME *OFF 3.36* CORR *200* / OMS *13.40* GMT
To *5* Tg *100* Remarks:

COND. NO. *5*



MAR 20 1966