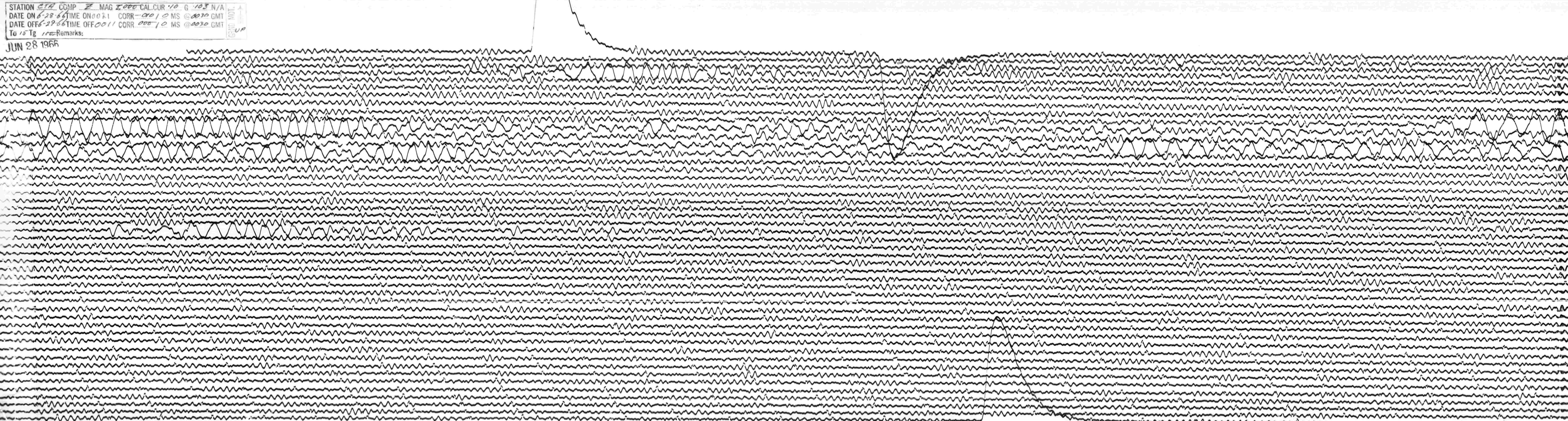


STATION *CTA* COMP *Z* MAG *2000* CAL. CUR *10* G *103* N/A  
DATE ON *6-28-66* TIME ON *0021* CORR *-0010* MS @ *0030* GMT  
DATE OFF *6-29-66* TIME OFF *0011* CORR *00010* MS @ *0030* GMT  
To *15* Tg *100* Remarks:

JUN 28 1966



JUN 29 1966

CTA  
LP-2