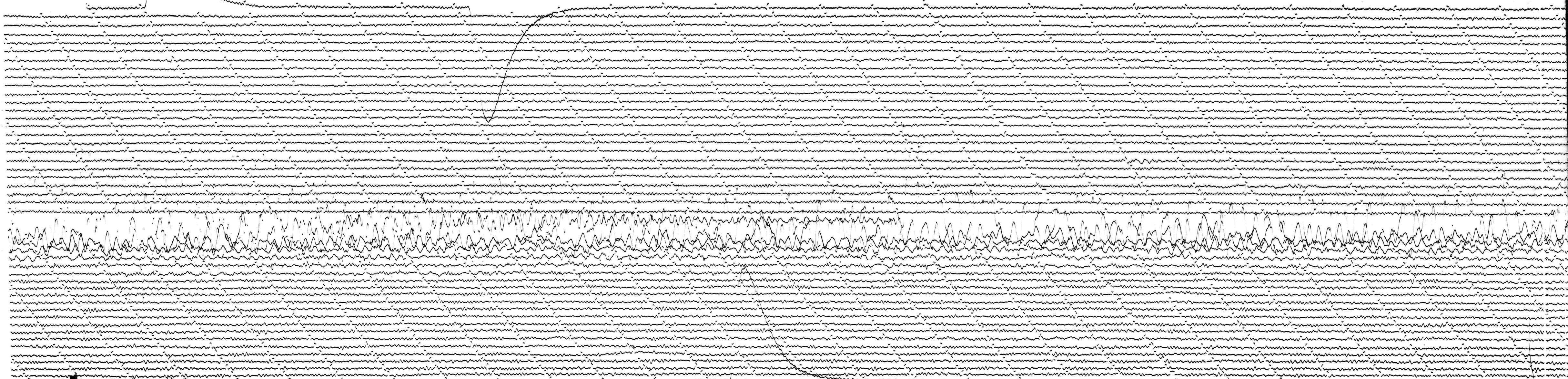


JUN 27 1966

STATION *MS* COMP *EL* MAG *3K* CAL. CUR *001* G. 0096 N/A
 DATE ON *6-27-66* TIME *011545* CORR *-0* *110* MS @ GMT
 DATE OFF *6-28-66* TIME OFF *1532* CORR *-0* *110* MS @ GMT
 To 15 Tg 100 Remarks:

GRAND MOT. ↑
 ↓

1600 GCT



ALTIMETER STATION
 37°52.6'N. 122°14.1'W, elev. 276m
 SPRENGNETH Tg = 15 Tg = 100

E ↑
 W ↓

JUN 28 1966

1530 GCT