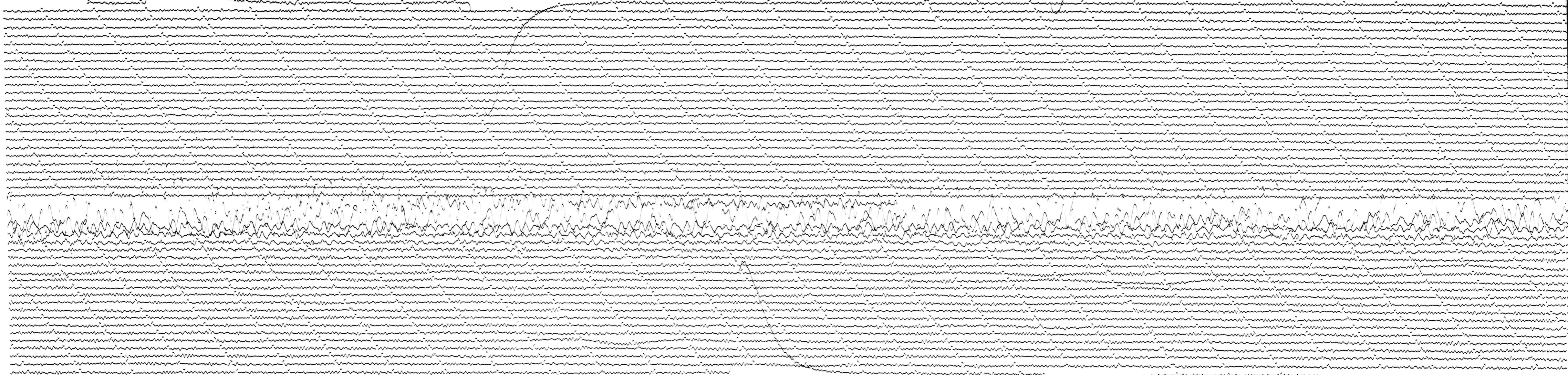


JUN 27 1966

STATION *BAS* COMP *NS* MAG *3K* C.A.L.CUR *101* GO *093N/A*  
 DATE ON *6-27-66* TIME O'1 *545* CORR *-0 10*MS @ GMT  
 DATE OFF *6-28-66* TIME OFF *1532* CORR *-0 10*MS @ GMT  
 To *15*Tg/100 Remarks:

GRAND MOT. ↑

1600 CT



VERLY GEOMAGNETIC STATION  
 37°52.6'N. 122°14.1'W, elev. 276m  
 SPRENGNETHER To = 15 Tg = 100

N ↑  
S ↓

JUN 28 1966

1530 CT