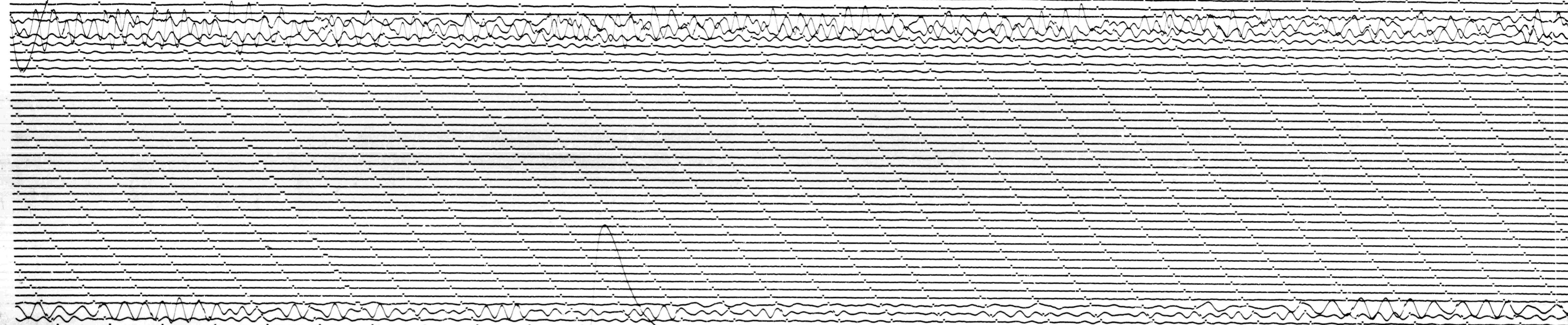


JUN 27 1966

STATION 15T COMP 2 MAG 15.00 CAL CUR 0.2 G 0.1133 N/A
DATE ON 6.27.66 TIME ON 0718 CORR -14.57.0 MS @ 0711 GMT
DATE OFF 6.28.66 TIME OFF 0743 CORR -85.1.0 MS @ 0711 GMT
To 45 Ig 100 Remarks:

COND. MOT. ↑
4p



JUN 28 1966

53