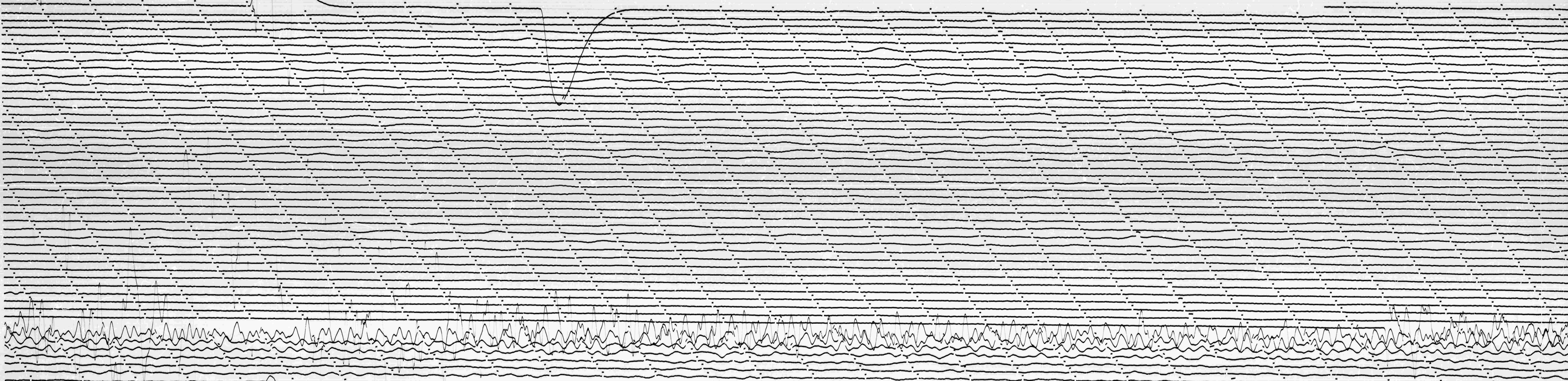


APR 28 1965

STATION COMP. N DATE 4/28/65 GRND. MOT. →
IN 19.7 GCT. OFF. 19.3 GCT. CORR. 390 AT 190 GCT.
CAL. CUR. 200 MOT. CONST. 0.93 MAG. 1.5K 10.15 18.100



COL

APR 29 1965