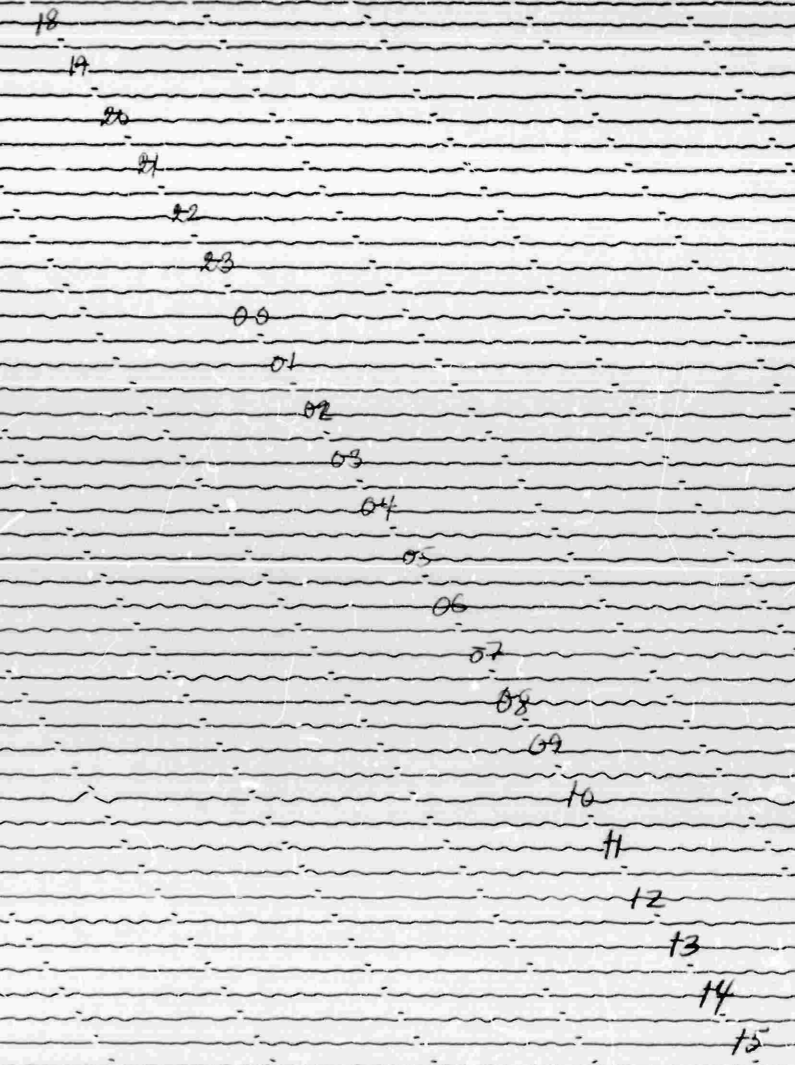
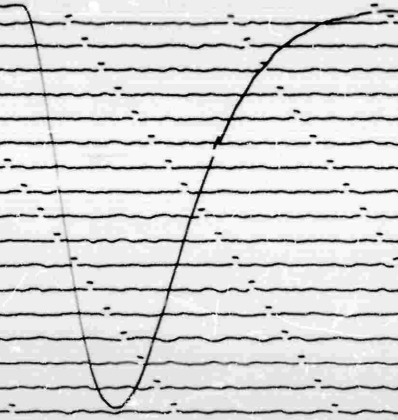


28 APR. 1965

STATION COMP. DATE 29 APR. 1965 GRID. MOT. 1.52
ON 1.52 GCT OFF 1.52 GCT CORR 33 SAT 1.52 GCT.
C.I.L. CUR. 2.2 MOT. CONST. 0.95 MAG. 1.52 40 20.18/0



29 APR. 1965