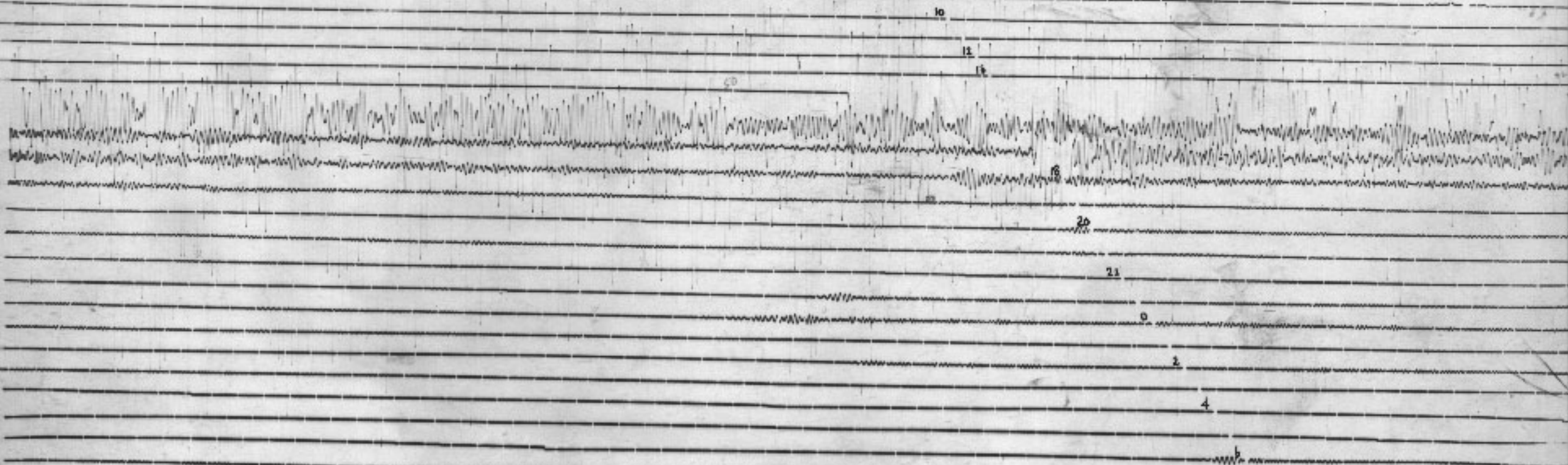


4-5-46
I

Beranda NE-SW Comp. NE↑

NOV Convect

4 Aug 1946



4-8-46
II

Bermuda NW-SE Comp. NW p

4 Aug 1946.

NW Correct

8

10

12

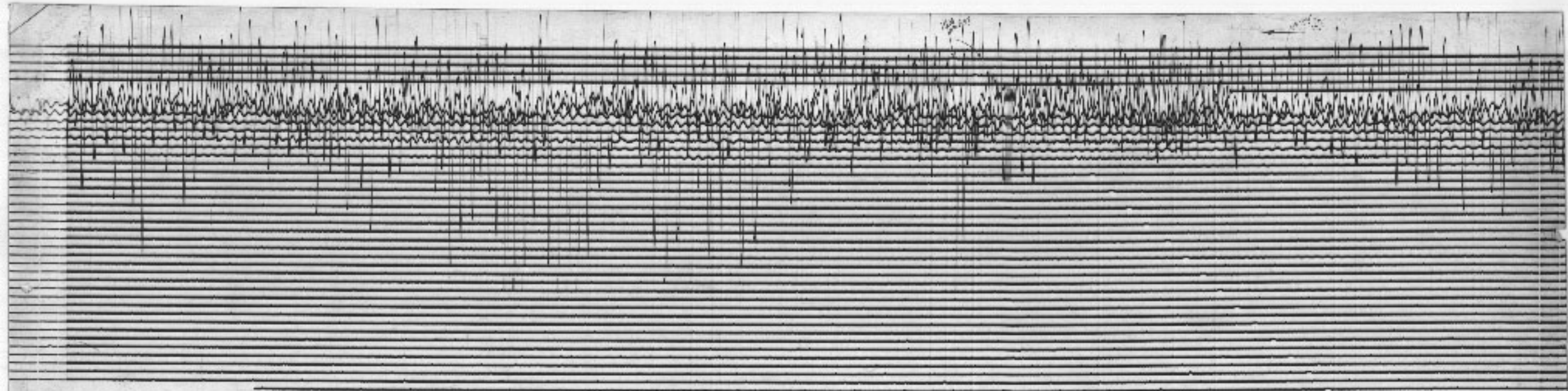
13

Movement too violent
Mirror arm displaced.
Focus very bad.

Handwritten notes
2-8, Aug 4, 1964

Handwritten notes
2-8, Aug 4, 1964

Handwritten notes
2-8, Aug 4, 1964



Standard Lead II
Tachycardia - Regular

CARDIAC CLINIC BUFFALO, N.Y.

Aug 9, 1950

COLLEGE ALABAMA H-W

11/12/1940

2011

NOV 12 1940
UNIVERSITY OF ALABAMA
LIBRARY

11/12/1940

NOV 12 1940
UNIVERSITY OF ALABAMA
LIBRARY

COLLEGE, ALASKA

7-8 RECEIVED

POSTAGE WILL BE PAID BY ADDRESSEE
FIRST CLASS PERMIT NO. 1000
ANCHORAGE, ALASKA

[The main body of the document contains approximately 25 horizontal lines, which appear to be a recording or data table. The lines are mostly blank, with some faint, illegible markings or bleed-through from the reverse side of the page.]

1958

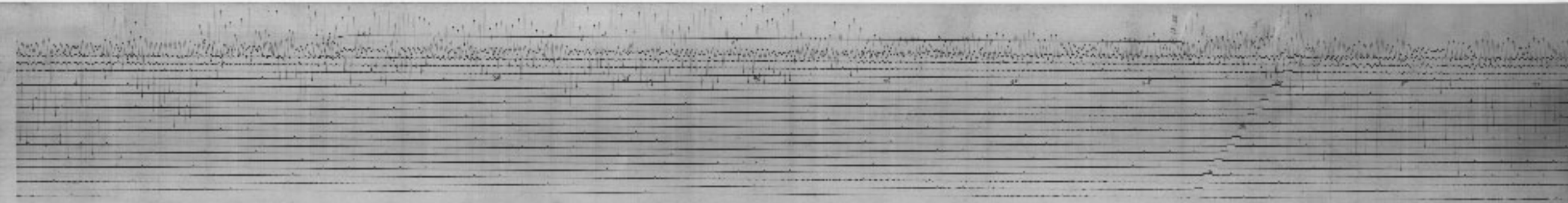
78

POSTAGE WILL BE PAID BY ADDRESSEE
FIRST CLASS PERMIT NO. 1000
ANCHORAGE, ALASKA

6.11.1906

[Faint, illegible handwriting on a page with horizontal lines]

MS. Submission, 2nd Aug 1946



25

11.5.5 - 1955
L.V. Hospital
London W.1

0

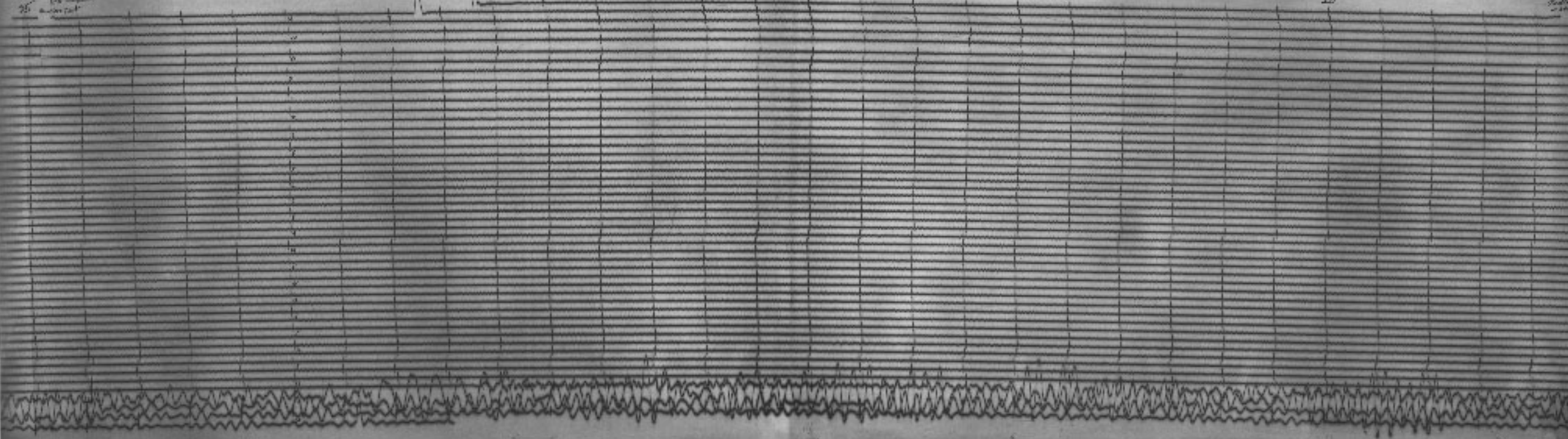
5

10

15

20

2.1.55



EST 1 - 2nd

0

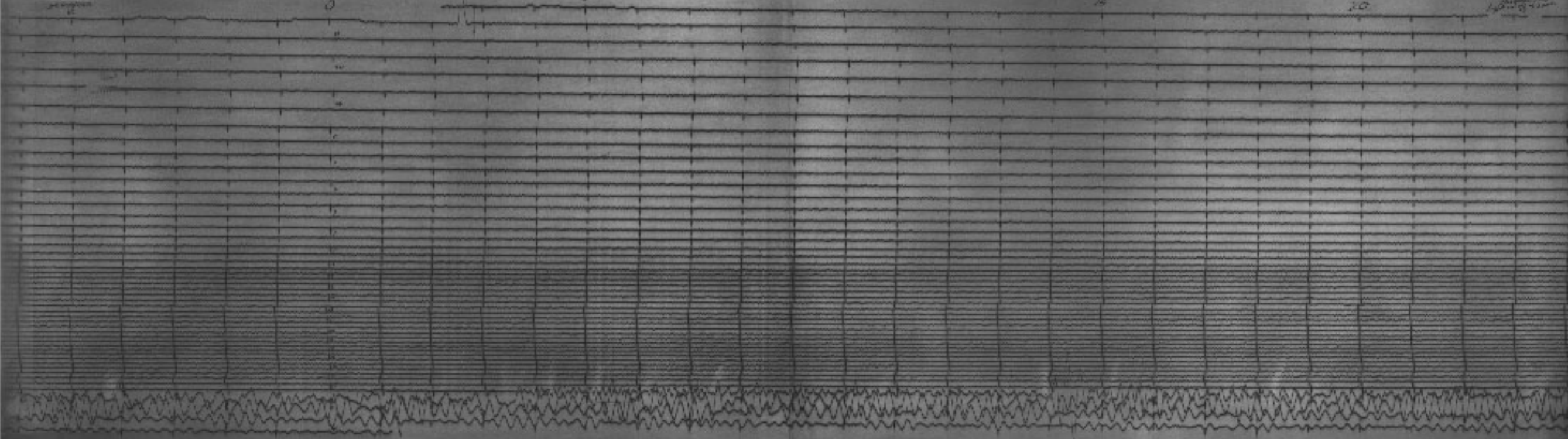
5

10

15

20

Handwritten notes

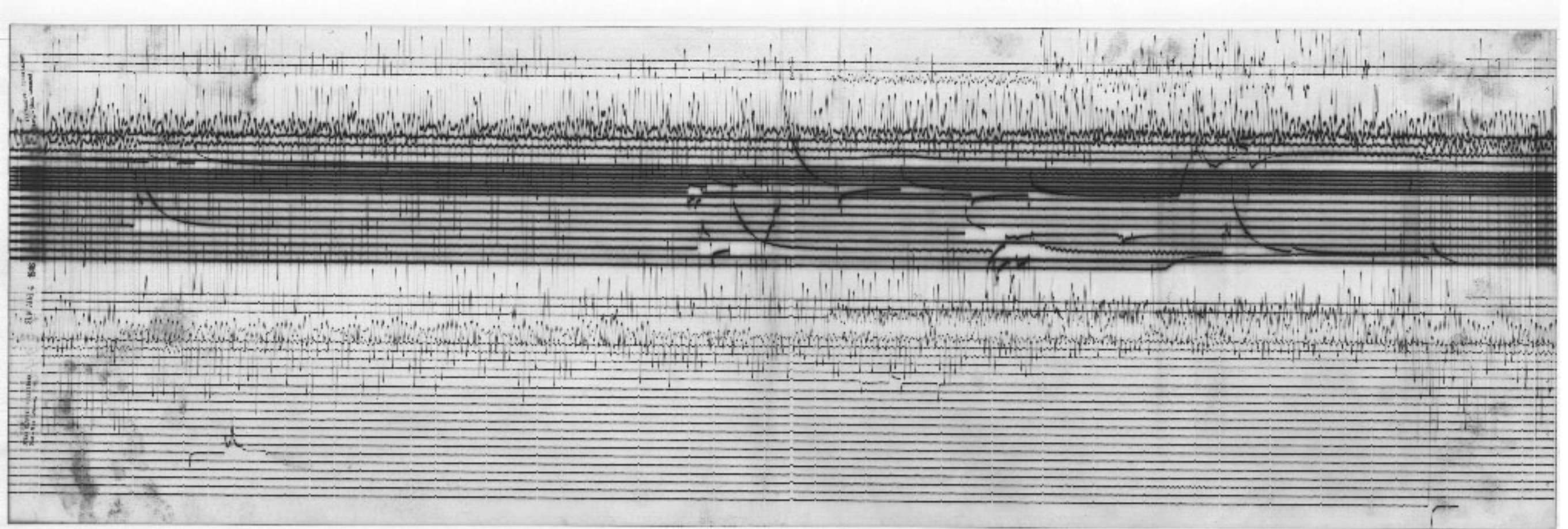


Linda Hbs
Aug 2-5 '66
E-W

Time correction - 102.3 610

501





MS 4 LINE

Page 1 of 1

EW

Handwritten notes:
1. 1/1/80
2. 1/1/80

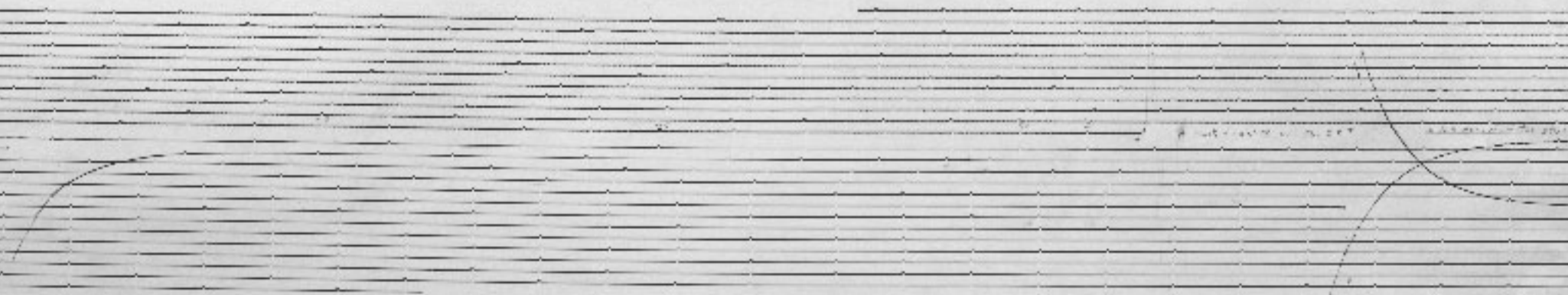
MS 4 LINE

100-100-100

STATION 100-100-100

100-100-100

100-100-100



Self - 1906
Aug 2 - 1906

12 11 10 9 8 7 6 5 4 3 2 1

