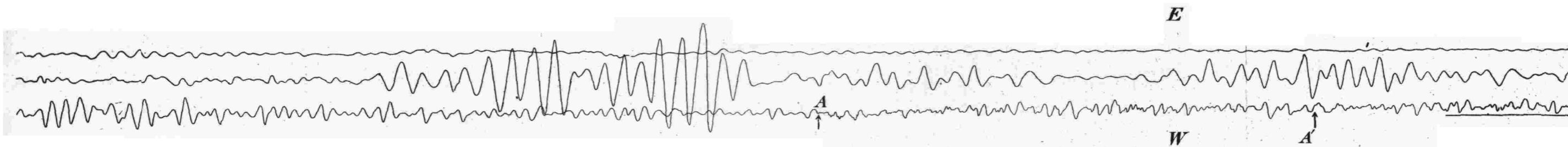


Osaka.

Horizontalpendel von Omori. E-W-Komponente.



I

Valparaiso Earthquake.

A = Commencement of the Earthquake: 1^h 00^m 15^s.

A' = " of the motion propagated along the Major Arc.

AB = 1st Preliminary Tremor.

BC = 2nd " "

Fortsetzung

auf

Tafel 55^{ll}

Aleutia

a = Commencement

ab = Preliminary

