

Line: Location Heacock Ave. Station spacing 1M 1st station 101 Last station 124
 Direction N→S Topo Quad(s) _____ Road name/# Heacock Ave Surveyed? _____

Source: Type _____ # _____ Stack _____
 Array length/type _____ SP Interval _____
 Receiver: Type _____ Gph frq _____
 Group Interval _____ Gphs/group _____
 Gph Array Length/Type _____

Records: Length 250 Sample Rate 0.25
 Hi cut filter _____ Low cut filter _____ Notch filter _____
 Conditions: Wind _____ Temp _____
 Traffic _____ Moisture _____
 Personnel: Observer _____
 Src Chief _____
 Cable Truck _____
 Surveyors _____

Sketches
 and
 Remarks

NOISE TESTS

File no.	SP no.	IRSWI no.	Station Location of				Remarks (Bad files, skips, reshoots, time, powerlines, etc.)
			Tr	Tr	Tr	Tr	
001	1M	1					1M North, black powder, 100Hz, BP errors, Noise limit on.
002							" " " " Noise limit off.
003							" " " " L.C. = 80
004							" " " " L.C. = 40
005	23M	1					black powder, 100Hz phones, no filters
006							" " " " L.C. = 40
007							" " " " L.C. = 80
008	46M						" " " "
009							" " " " L.C. = 40
010							" " " " no filters
011	46M						28Hz phones, black powder, L.C. = 40
012	1M						100Hz phones, Hammer, L.C. = 40
013							" " " "
014	23M						" " " " L.C. = 80
							START ACQUISITION
							100Hz phones, 2M spacing, 1 station offset
							80Hz Low Cut, 12 ga black powder blanks.
18	100	1	101	112	113	124	BP errors
19	101	2					
20	102	3					
21	103	4					
22	104	5					
23	105	6					
24	106	7					
25	107	8					
26	108	9					
27	109	10					
28	110	11					
29	111	12					
30	112	13					
31	113	14					
32	114	15					

Project MARCH AFB Line MAFB-2 Date 4-17-96 Tape # 049610 Page # 3 of

Line: Location Station spacing 1st station 101 Last station
 Direction N→S Topo Quad(s) Road name/# Heacock Surveyed?

Source: Type 12 ga # 1 Stack 1 Receiver: Type L-40A-2 Gph frq 100
 Array length/type SP Interval 2M Group Interval 2M Gphs/group 1
black powder blanks Gph Array Length/Type

Records: Length 250 Sample Rate 0.25 Personnel: Observer WORLEY
 Hi cut filter OUT Low cut filter 80 Notch filter OUT Src Chief
 Conditions: Wind Calm/light Temp 70's Cable Truck
 Traffic Moisture dry Surveyors

Sketches

and

Remarks

File no.	SP no.	RSW no.	Station Location of				Remarks (Bad files, skips, reshoots, time, Powerlines, etc.)
			Tr 1	Tr 2	Tr 3	Tr 4	
42	124	1	125	136	137	148	
43	125	2					
44	126	3					
45	127	4					
46	128	5					
47	129	6					
48	130	7					
49	131	8					
50	132	9					
51	133	10					
52	134	11					
53	135	12					
54	136	13					
55	137	14					
56	138	15					
57	139	16					B/P errors
58	140	17					
59	141	18					
60	142	19					
61	143	20					B/P errors
62	144	21					
63	145	22					
64	146	23					
65	147	24					
66	148	1	149	160	161	172	move truck
67	149	2					
68	150	3					
69	151	4					
70	152	5					
71	153	6					
72	154	7					
73	155	8					
74	156	9					
75	157	10					
76	158	11					
77	159	12					
78	160	13					

Line: Location _____ Station spacing _____ 1st station _____ Last station _____
 Direction _____ Topo Quad(s) _____ Road name/# Heacock Surveyed? _____

Source: Type _____ # _____ Stack _____
 Array length/type _____ / _____ SP Interval _____
 Reveiver: Type _____ Gph frq _____
 Group Interval _____ Gphs/group _____
 Gph Array Length/Type _____ / _____

Records: Length _____ Sample Rate _____
 Hi cut filter _____ Low cut filter _____ Notch filter _____
 Conditions: Wind _____ Temp _____
 Traffic _____ Moisture _____
 Personnel: Observer _____
 Src Chief _____
 Cable Truck _____
 Surveyors _____

Sketches

and

Remarks

File no.	SP no.	RSW no.	Station Location of				Remarks (Bad files, skips, reshoots, time, Powerlines, etc.)
			Tr	Tr	Tr	Tr	
79	161	14					
80	162	15					
81	163	16					
82	164	17					
83	165	18					
84	166	19					
85	167	20					
86	168	21					
87	169	22					
88	170	23					
89	171	24					
90	172	1				move truck	
91	173	2					
92	174	3					
93	175	4					
94	176	5					
95	177	6					
96	178	7					
97	179	8					
98	180	9					
99	181	10					
100	182	11					
101	183	12					
102	184	13					
103	185	14					
104	186	15					
105	187	16					
106	188	17					
107	189	18					
108	190	19					
109	191	20					
110	192	21					
111	193	22					
112	194	23					
113	195	24					
114	196	1	197	208	209	220	

Line: Location _____ Station spacing _____ 1st station _____ Last station _____
 Direction _____ Topo Quad(s) _____ Road name/# _____ Surveyed? _____

Source: Type _____ # _____ Stack _____
 Array length/type _____ / _____ SP Interval _____
 Reveiver: Type _____ Gph frq _____
 Group Interval _____ Gphs/group _____
 Gph Array Length/Type _____ / _____

Records: Length _____ Sample Rate _____
 Hi cut filter _____ Low cut filter _____ Notch filter _____
 Conditions: Wind _____ Temp _____
 Traffic _____ Moisture _____
 Personnel: Observer _____
 Src Chief _____
 Cable Truck _____
 Surveyors _____

Sketches
 and
 Remarks

File no.	SP no.	IRSW no.	Station Location of				Remarks (Bad files, skips, reshoots, time, Powerlines, etc.)
			Tr	Tr	Tr	Tr	
115	197	2					
116	198	3					
117	199	4					
118	200	5					
119	201	6					
120	202	7					
121	203	8					
122	204	9					
123	205	10					
124	206	11					
125	207	12					
126	208	13					
127	209	14					
128	210	15					
129	211	16					
130	212	17					
131	213	18					
132	214	19					
133	215	20					
134	216	21					
135	217	22					
136	218	23					
137	219	24					END TAPE 049610 move truck START TAPE 049611
138	220	1	221	232	233	244	B/P errors
139	221	2					B/P errors
140	222	3					
141	223	4					
142	224	5					
143	225	6					
144	226	7					
145	227	8					
146	228	9					B/P errors
147	229	10					
148	230	11					
149	231	12					
150	232	13					

Line: Location _____ Station spacing _____ 1st station _____ Last station _____
 Direction _____ Topo Quad(s) _____ Road name/# _____ Surveyed? _____

Source: Type _____ # _____ Stack _____ Receiver: Type _____ Gph frq _____
 Array length/type _____ / _____ SP Interval _____ Group Interval _____ Gphs/group _____
 Gph Array Length/Type _____ / _____

Records: Length _____ Sample Rate _____ Personnel: Observer _____
 Hi cut filter _____ Low cut filter _____ Notch filter _____ Src Chief _____
 Conditions: Wind _____ Temp _____ Cable Truck _____
 Traffic _____ Moisture _____ Surveyors _____

Sketches

and

Remarks

File no.	SP no.	RSW no.	Station Location of				Remarks (Bad files, skips, reshoots, time, Powerlines, etc.)
			Tr 1	Tr 2	Tr 3	Tr 4	
186	110	11					Shotgun
187	108	9					
188	109	10					
189	111	12					
190	112	13					
191	113	14					
192	114	15					
193	115	16					
194	116	17					
195	117	18					
196	118	19					windy
197	119	20					
198	120	21					
199	121	22					
200	122	23					
201	123	24					
202	125	2	126	137	138	149	move truck skipped 124
203	126	3					
204	127	4					
205	128	5					
206	129	6					
207	130	7					
208	131	8					
209	132	9					
210	133	10					
211	134	11					
212	135	12					
213	136	13					
214	137	14					
215	138	15					
216	139	16					
217	140	17					
218	141	18					
219	142	19					
220	143	20					
221	144	21					
222	145	22					

Project _____ Line MAFB-2 Date 4-17-56 Tape # 049611 Page # 8 of _____

Line: Location _____ Station spacing _____ 1st station _____ Last station _____
 Direction _____ Topo Quad(s) _____ Road name/# _____ Surveyed? _____

Source: Type _____ # _____ Stack _____
 Array length/type _____ / _____ SP Interval _____
 Receiver: Type _____ Gph frq _____
 Group Interval _____ Gphs/group _____
 Gph Array Length/Type _____ / _____

Records: Length _____ Sample Rate _____
 Hi cut filter _____ Low cut filter _____ Notch filter _____
 Conditions: Wind _____ Temp _____
 Traffic _____ Moisture _____
 Personnel: Observer _____
 Src Chief _____
 Cable Truck _____
 Surveyors _____

Sketches
 and
 Remarks

File no.	SP no.	RSW no.	Station Location of				Remarks (Bad files, skips, reshoots, time, Powerlines, etc.)
			Tr	Tr	Tr	Tr	
223	146	23					
224	147	24					
							move truck
225	148	1	149	160	161	172	B/P errors
226	149	2					
227	150	3					
228	151	4					
229	152	5					
230	153	6					
231	154	7					
232	155	8					
233	156	9					
234	157	10					
235	158	11					
236	159	12					END 049611
237	160	13					END TAP 049611 START 049612 B/P errors
238	161	14					START TAP 049612 Roll SW at 13
239	161	14					Reshoot
240	162	15					
241	163	16					
242	164	17					
243	165	18					
244	166	19					
245	167	20					
246	168	21					
247	169	22					
248	170	23					
249	171	24					
							move truck.
250	172	1	173	184	185	196	
251	173	2					Hammer hit at same time
252	173	2					Reshoot
253	174	3					
254	175	4					
255	176	5					
256	177	6					
257	178	7					

Project March AFB Line MAFB-2 Date 4-17-96 Tape # _____ Page # 9 of _____

Line: Location March AFB Station spacing _____ 1st station _____ Last station _____
 Direction _____ Topo Quad(s) _____ Road name/# _____ Surveyed? _____

Source: Type _____ # _____ Stack _____ Receiver: Type _____ Gph frq _____
 Array length/type _____ / _____ SP Interval _____ Group Interval _____ Gphs/group _____
 Gph Array Length/Type _____ / _____

Records: Length _____ Sample Rate _____ Personnel: Observer _____
 Hi cut filter _____ Low cut filter _____ Notch filter _____ Src Chief _____
 Conditions: Wind _____ Temp _____ Cable Truck _____
 Traffic _____ Moisture _____ Surveyors _____

Sketches

and

Remarks

File no.	SP no.	RSW no.	Station Location of				Remarks (Bad files, skips, reshoots, time, Powerlines, etc.)
			Tr	Tr	Tr	Tr	
258	179	8					
259	180	9					
260	181	10					
261	182	11					
262	183	12					
263	184	13					
264	185	14					
265	186	15					
266	187	16					<i>Planes running up nearby.</i>
267	188	17					
268	189	18					
269	190	19					
270	191	20					
271	192	21					
272	193	22					
273	194	23					
274	195	24					
275	196	1	197	208	209	220	<i>END OF DAY. START 4-18-96 Drilled shot holes w/ power aug. etc.</i>
276	197	2					
277	198	3					
278	199	4					
279	200	5					
280	201	6					
281	202	7					
282	203	8					
283	204	9					
284	205	10					
285	206	11					
286	207	12					
287	208	13					
288	209	14					
289	210	15					
290	211	16					
291	212	17					
292	213	18					
293	214	19					
294	215	20					

Line: Location March AFB Station spacing 1st station Last station
 Direction Topo Quad(s) Road name/# Surveyed?

Source: Type # Stack Receiver: Type Gph frq
 Array length/type / SP Interval Group Interval Gphs/group
 Gph Array Length/Type /

Records: Length Sample Rate Personnel: Observer
 Hi cut filter Low cut filter Notch filter Src Chief
 Conditions: Wind Temp Cable Truck
 Traffic Moisture Surveyors

Sketches
and
Remarks

*289, 286, 284 on blocks
285, 287, 288 dead*

File no.	SP no.	RSW no.	Station Location of				Remarks (Bad files, skips, reshoots, time, Powerlines, etc.)
			Tr	Tr	Tr	Tr	
295	216	21					
296	217	22					
297	218	23					<i>B/P errors</i>
298	219	24					<i>move truck</i>
299	220	1	221	232	233	244	<i>drilled shot holes w/ Ryobi + steel bar.</i>
300	221	2					
301	222	3					
302	223	4					
303	224	5					
304	225	6					
305	226	7					
306	227	8					
307	228	9					
308	229	10					
309	230	11					
310	231	12					
311	232	13					
312	233	14					
313	234	15					
314	235	16					
315	236	17					
316	237	18					
317	238	19					
318	239	20					
319	240	21					
320	241	22					
321	242	23					
322	243	24					<i>End top - 049612 move truck</i>
323	244	1	245	256	257	268	<i>Start 049613</i>
324	245	2					
325	246	3					
326	247	4					
327	248	5					
328	249	6					
329	250	7					
330	251	8					

Line: Location _____ Station spacing _____ 1st station _____ Last station _____
 Direction _____ Topo Quad(s) _____ Road name/# _____ Surveyed? _____

Source: Type _____ # _____ Stack _____
 Array length/type _____ / _____ SP Interval _____
 Receiver: Type _____ Gph frq _____
 Group Interval _____ Gphs/group _____
 Gph Array Length/Type _____ / _____

Records: Length _____ Sample Rate _____
 Hi cut filter _____ Low cut filter _____ Notch filter _____
 Conditions: Wind _____ Temp _____
 Traffic _____ Moisture _____
 Personnel: Observer _____
 Src Chief _____
 Cable Truck _____
 Surveyors _____

Sketches

and

Remarks

File no.	SP no.	RSW no.	Station Location of				Remarks (Bad files, skips, reshoots, time, Powerlines, etc.)
			Tr	Tr	Tr	Tr	
331	252	9					
332	253	10					
333	254	11					
334	255	12					
335	256	13					
336	257	14					
337	258	15					
338	259	16					
339	260	17					
340	261	18					
341	262	19					
342	263	20					
343	264	21					
344	265	22					
345	266	23					
346	267	24					
347	268	1	269	280	281	292	man-truck
348	269	2					
349	270	3					
350	271	4					
351	272	5					
352	273	6					
353	274	7					
354	275	8					
355	276	9					
356	277	10					
357	278	11					
358	279	12					
359	280	13					
360	281	14					
361	282	15					
362	283	16					
363	284	17					Hammer for crossing road. 10 th stage
364	285	18					
365	286	19					SS-1 loose from plate, sitting on ground
366	287	20					
367	288	21					

Line: Location _____ Station spacing _____ 1st station _____ Last station _____
 Direction _____ Topo Quad(s) _____ Road name/# _____ Surveyed? _____

Source: Type _____ # _____ Stack _____ Receiver: Type _____ Gph frq _____
 Array length/type _____ / _____ SP Interval _____ Group Interval _____ Gphs/group _____
 Gph Array Length/Type _____ / _____

Records: Length _____ Sample Rate _____ Personnel: Observer _____
 Hi cut filter _____ Low cut filter _____ Notch filter _____ Src Chief _____
 Conditions: Wind _____ Temp _____ Cable Truck _____
 Traffic _____ Moisture _____ Surveyors _____

Sketches AT 313, seis line becomes parallel to, and under, a
 and power line;
 Remarks

File no.	SP no.	RSW no.	Station Location of				Remarks (Bad files, skips, reshoots, time, Powerlines, etc.)
			Tr 1	Tr 12	Tr 13	Tr 24	
368	289	22					<u>Back to shotgun, east side of road.</u>
369	290	23					
370	291	24					
371	292	1	293	304	305	316	<u>move truck</u> <u>B/P errors</u>
372	293	2					
373	294	3					
374	295	4					
375	296	5					
376	297	6					
377	298	7					
378	299	8					
379	300	9					
380	301	10					
381	302	11					
382	303	12					
383	304	13					
384	305	14					
385	306	15					
386	307	16					
387	308	17					
388	309	18					<u>B/P errors</u>
389	310	19					
390	311	20					
391	312	21					
392	313	22					
393	314	23					
394	315	24					
395	316	1	317	328	329	340	<u>move truck</u>
396	317	2					
397	318	3					
398	319	4					
399	320	5					
400	321	6					
401	322	7					
402	323	8					
403	324	9					

Line: Location _____ Station spacing _____ 1st station _____ Last station _____
 Direction _____ Topo Quad(s) _____ Road name/# _____ Surveyed? _____

Source: Type _____ # _____ Stack _____ Receiver: Type _____ Gph frq _____
 Array length/type _____ / _____ SP Interval _____ Group Interval _____ Gphs/group _____
 Gph Array Length/Type _____ / _____

Records: Length _____ Sample Rate _____ Personnel: Observer _____
 Hi cut filter _____ Low cut filter _____ Notch filter _____ Src Chief _____
 Conditions: Wind _____ Temp _____ Cable Truck _____
 Traffic _____ Moisture _____ Surveyors _____

Sketches
 and
 Remarks

File no.	SP no.	RSW no.	Station Location of				Remarks (Bad files, skips, reshoots, time, Powerlines, etc.)
			Tr 1	Tr 2	Tr 3	Tr 4	
404	325	10					
405	326	11					
406	327	12					
407	328	13					
408	329	14					
409	330	15					
410	331	16					
411	332	17					
412	333	18					
413	334	19					
414	335	20					
415	336	21					
416	337	22					
417	338	23					
418	339	24					End tape 049613 move truck start 049614
419	340	1	341	352	353	364	Very windy
420	341	2					
421	342	3					10# Hammer
422	343	4					
423	344	5					
424	345	6					12 gal
425	346	7					
426	347	8					
427	348	9					
428	349	10					
429	350	11					
430	351	12					
431	352	13					
432	353	14					
433	354	15					
434	355	16					
435	356	17					
436	357	18					
437	358	19					
438	359	20					
439	360	21					

Line: Location _____ Station spacing _____ 1st station _____ Last station _____
 Direction _____ Topo Quad(s) _____ Road name/# _____ Surveyed? _____

Source: Type _____ # _____ Stack _____ Receiver: Type _____ Gph frq _____
 Array length/type _____ / _____ SP Interval _____ Group Interval _____ Gphs/group _____
 Gph Array Length/Type _____ / _____

Records: Length _____ Sample Rate _____ Personnel: Observer _____
 Hi cut filter _____ Low cut filter _____ Notch filter _____ Src Chief _____
 Conditions: Wind _____ Temp _____ Cable Truck _____
 Traffic _____ Moisture _____ Surveyors _____

392, 393, 394 land in road.

Sketches

and

Remarks

File no.	SP no.	IRSW no.	Station Location of				Remarks (Bad files, skips, reshoots, time, Powerlines, etc.)
			Tr	Tr	Tr	Tr	
440	361	22					
441	362	23					
442	363	24					
443	364	1	365	376	377	388	move truck
444	365	2					
445	366	3					
446	367	4					
447	368	5					
448	369	6					
449	370	7					
450	371	8					
451	372	9					
452	373	10					
453	374	11					
454	375	12					
455	376	13					
456	377	14					
457	378	15					
458	379	16					
459	380	17					
460	381	18					
461	382	19					
462	383	20					
463	384	21					
464	385	22					
465	386	23					
466	387	24					
467	388	1					move truck
468	389	2					Hammer crossing road.
469	390	3					
470	391	4					
471	392	5					
472	393	6					
473	394	7					
474	395	8					
475	396	9					

Line: Location _____ Station spacing _____ 1st station _____ Last station _____
 Direction _____ Topo Quad(s) _____ Road name/# _____ Surveyed? _____

Source: Type _____ # _____ Stack _____ Receiver: Type _____ Gph frq _____
 Array length/type _____ / _____ SP Interval _____ Group Interval _____ Gphs/group _____
 Gph Array Length/Type _____ / _____

Records: Length _____ Sample Rate _____ Personnel: Observer _____
 Hi cut filter _____ Low cut filter _____ Notch filter _____ Src Chief _____
 Conditions: Wind _____ Temp _____ Cable Truck _____
 Traffic _____ Moisture _____ Surveyors _____

Sketches

and

Remarks

File no.	SP no.	RSW no.	Station Location of				Remarks (Bad files, skips, reshoots, time, Powerlines, etc.)
			Tr 1	Tr 2	Tr 3	Tr 4	
476	397	10					
477	398	11					
478	399	12					
479	400	13					
480	401	14					Shotgun
481	402	15					
482	403	16					
483	404	17					
484	405	18					
485	406	19					
486	407	20					
487	408	21					
488	409	22					
489	410	23					
490	411	24					motor truck
491	412	1	413	424	425	436	
492	413	2					
493	414	3					
494	415	4					
495	416	5					
496	417	6					
497	418	7					
498	419	8					
499	420	9					
500	421	10					
501	422	11					
502	423	12					
503	424	13					
504	425	14					
505	426	15					
506	427	16					
507	428	17					
508	429	18					
509	430	19					
510	431	20					
511	432	21					
512	433	22					

Line: Location _____ Station spacing _____ 1st station _____ Last station _____
 Direction _____ Topo Quad(s) _____ Road name/# _____ Surveyed? _____

Source: Type _____ # _____ Stack _____ Receiver: Type _____ Gph frq _____
 Array length/type _____ / _____ SP Interval _____ Group Interval _____ Gphs/group _____
 Gph Array Length/Type _____ / _____

Records: Length _____ Sample Rate _____ Personnel: Observer _____
 Hi cut filter _____ Low cut filter _____ Notch filter _____ Src Chief _____
 Conditions: Wind _____ Temp _____ Cable Truck _____
 Traffic _____ Moisture _____ Surveyors _____

Sketches

and

Remarks

File no.	SP no.	RSW no.	Station Location of				Remarks (Bad files, skips, reshoots, time, Powerlines, etc.)
			Tr 1	Tr 12	Tr 13	Tr 24	
513	434	23					
514	435	24					End tape 049614 move truck Start 049615
515	436	1	437	448	449	460	
516	437	2					
517	438	3					
518	439	4					
519	440	5					
520	441	6					
521	442	7					
522	443	8					
523	444	9					
524	445	10					
525	446	11					
526	447	12					
527	448	13					
528	449	14					
529	450	15					
530	451	16					
531	452	17					
532	453	18					
533	454	19					
534	455	20					
535	456	21					
536	457	22					
537	458	23					
538	459	24					
539	460	1	461	472	473	484	W.O.D. Start 4-19-96
540	461	2					
541	462	3					
542	463	4					
543	464	5					
544	465	6					
545	466	7					
546	467	8					Hammer
547	468	9					

Line: Location _____ Station spacing _____ 1st station _____ Last station _____
 Direction _____ Topo Quad(s) _____ Road name/# _____ Surveyed? _____

Source: Type _____ # _____ Stack _____ Receiver: Type _____ Gph frq _____
 Array length/type _____ / _____ SP Interval _____ Group Interval _____ Gphs/group _____
 Gph Array Length/Type _____ / _____

Records: Length _____ Sample Rate _____ Personnel: Observer _____
 Hi cut filter _____ Low cut filter _____ Notch filter _____ Src Chief _____
 Conditions: Wind _____ Temp _____ Cable Truck _____
 Traffic _____ Moisture _____ Surveyors _____

Sketches
 and
 Remarks

File no.	SP no.	RSWI no.	Station Location of				Remarks (Bad files, skips, reshoots, time, Powerlines, etc.)
			Tr	Tr	Tr	Tr	
585	506	23					
586	507	24					
587	508	1	509	520	521	532	move truck 8:55 AM
588	509	2					
589	510	3					
590	511	4					
591	512	5					
592	513	6					9:36 AM
593	514	7					
594	515	8					
595	516	9					
596	517	10					
597	518	11					
598	519	12					
599	520	13					
600	521	14					
601	522	15					
602	523	16					
603	524	17					
604	525	18					
605	526	19					
606	527	20					
607	528	21					
608	529	22					
609	530	23					
610	531	24					end tape 049615 move truck 9:46 AM
611	532	1	533	544	545	586	start 049616 Notch out. Roll sw at 1.
612	533	X					
613	534	3					
614	535	4					
615	536	5					
616	537	6					
617	538	7					
618	539	8					10:37 AM
619	540	9					
620	541	10					

Line: Location _____ Station spacing _____ 1st station _____ Last station _____
 Direction _____ Topo Quad(s) _____ Road name/# _____ Surveyed? _____

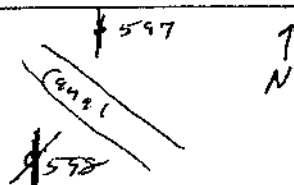
Source: Type _____ # _____ Stack _____ Receiver: Type _____ Gph frq _____
 Array length/type _____ / _____ SP Interval _____ Group Interval _____ Gphs/group _____
 Gph Array Length/Type _____ / _____

Records: Length _____ Sample Rate _____ Personnel: Observer _____
 Hi cut filter _____ Low cut filter _____ Notch filter _____ Src Chief _____
 Conditions: Wind _____ Temp _____ Cable Truck _____
 Traffic _____ Moisture _____ Surveyors _____

Sketches 597 - last phone = North side of canal.

and

Remarks



File no.	SP no.	RSW no.	Station Location of				Remarks (Bad files, skips, reshoots, time, Powerlines, etc.)
			Tr	Tr	Tr	Tr	
621	542	11					
622	543	12					
623	544	13					
624	545	14					
625	546	15					
626	547	16					
627	548	17					
628	549	18					
629	550	19					
630	551	20					
631	552	21					
632	553	22					
633	554	23					
634	555	24					
635	556	1	557	568	569	580	move truck
636	557	2					
637	558	3					
638	559	4					
639	560	5					
640	561	6					
641	562	7					
642	563	8					
643	564	9					
644	565	10					
645	566	11					
646	567	12					
647	568	13					
648	569	14					
649	570	15					
650	571	16					
651	572	17					
652	573	18	574	585	586	592	
653	574						
654	575						
655	576						
656	577						
657	578						

Line: Location _____ Station spacing _____ 1st station _____ Last station _____
 Direction _____ Topo Quad(s) _____ Road name/# _____ Surveyed? _____
 Source: Type _____ # _____ Stack _____ Receiver: Type _____ Gph frq _____
 Array length/type _____ / _____ SP Interval _____ Group Interval _____ Gphs/group _____
 Gph Array Length/Type _____ / _____
 Records: Length _____ Sample Rate _____ Personnel: Observer _____
 Hi cut filter _____ Low cut filter _____ Notch filter _____ Src Chief _____
 Conditions: Wind _____ Temp _____ Cable Truck _____
 Traffic _____ Moisture _____ Surveyors _____

Sketches

and

Remarks

File no.	SP no.	RSW no.	Station Location of				Remarks (Bad files, skips, reshoots, time, Powerlines, etc.)
			Tr 1	Tr 12	Tr 13	Tr 24	
658	579	18	574	585	586	597	
659	580						
660	581						
661	582						B/P errors
662	583						
663	584						
664	585						
665	586						
666	587						
667	588						
668	589						
669	590						
670	591						
671	592	✓					
672	597	6	598	609	610	621	move truck across canal, 12:30 PM
673	598	7					
674	599	8					
675	600	9					
676	601	10					
677	602	11					
678	603	12					
679	604	13					
680	605	14					
681	606	15					
682	607	16					shot offset 1M toward 608 & 1/2 M West,
683	608	17					
684	609	18					
685	610	19					Offset 1M West
686	611	20					
687	612	21					Offset 1M West
688	613	22					
689	614	23					
690	615	24					end tape 049616 move truck
691	616	1	617	628	629	640	start 049617
692	617	2					
693	618	3					

Line: Location _____ Station spacing _____ 1st station _____ Last station _____
 Direction _____ Topo Quad(s) _____ Road name/# _____ Surveyed? _____

Source: Type _____ # _____ Stack _____ Receiver: Type _____ Gph frq _____
 Array length/type _____ / _____ SP Interval _____ Group Interval _____ Gphs/group _____
 Gph Array Length/Type _____ / _____

Records: Length _____ Sample Rate _____ Personnel: Observer _____
 Hi cut filter _____ Low cut filter _____ Notch filter _____ Src Chief _____
 Conditions: Wind _____ Temp _____ Cable Truck _____
 Traffic _____ Moisture _____ Surveyors _____

Sketches
 and
 Remarks

File no.	SP no.	RSW no.	Station Location of				Remarks (Bad files, skips, reshoots, time, Powerlines, etc.)
			Tr	Tr	Tr	Tr	
694	619	4					
695	620	5					
696	621	6					
697	622	7					
698	623	8					
699	624	9					
700	625	10					
701	626	11					
702	627	12					
703	628	13					
704	629	14					
705	630	15					
706	631	16					
707	632	17					
708	633	18					
709	634	19					
710	635	20					
711	636	21					
712	637	22					
713	638	23					
714	639	24					
715	640	1	641	652	653	664	Power Tracts
716	641	2					
717	642	3					
718	643	4					
719	644	5					
720	645	6					
721	646	7					
722	647	8					
723	648	9					
724	649	10					
725	650	11					
726	651	12					
727	652	13					
728	653	14					
729	654	15					
730	655	16					

Line: Location _____ Station spacing _____ 1st station _____ Last station _____
 Direction _____ Topo Quad(s) _____ Road name/# _____ Surveyed? _____

Source: Type _____ # _____ Stack _____ Receiver: Type _____ Gph frq _____
 Array length/type _____ / _____ SP Interval _____ Group Interval _____ Gphs/group _____
 Gph Array Length/Type _____ / _____

Records: Length _____ Sample Rate _____ Personnel: Observer _____
 Hi cut filter _____ Low cut filter _____ Notch filter _____ Src Chief _____
 Conditions: Wind _____ Temp _____ Cable Truck _____
 Traffic _____ Moisture _____ Surveyors _____

Sketches
 and
 Remarks

File no.	SP no.	RSW! no.	Station Location of				Remarks (Bad files, skips, reshoots, time, Powerlines, etc.)
			Tr 1	Tr 2	Tr 3	Tr 4	
739	664	1	665	676	677	688	START 049618 4-30-96
740	665	2					
741	666	3					
742	667	4					
743	668	5					B/P errors
744	669	6					
745	670	7					
746	671	8					
747	672	9					
748	673	10					
749	674	11					
750	675	12					
751	676	13					
752	677	14					
753	678	15					
754	679	16					
755	680	17					8:00 AM
756	681	18					
757	682	19					
758	683	20					
759	684	21					
760	685	22					
761	686	23					
762	687	24					move tracks
763	688	1	689	700	701	712	
764	689	2					
765	690	3					
766	691	4					
767	692	5					
768	693	6					
769	694	7					
770	695	8					
771	696	9					
772	697	10					
773	698	11					
774	699	12					8:37 AM
775	700	13					

Line: Location _____ Station spacing _____ 1st station _____ Last station _____
 Direction _____ Topo Quad(s) _____ Road name/# _____ Surveyed? _____

Source: Type _____ # _____ Stack _____
 Array length/type _____ / _____ SP Interval _____
 Receiver: Type _____ Gph frq _____
 Group Interval _____ Gphs/group _____
 Gph Array Length/Type _____ / _____

Records: Length _____ Sample Rate _____
 Hi cut filter _____ Low cut filter _____ Notch filter _____
 Conditions: Wind _____ Temp _____
 Traffic _____ Moisture _____
 Personnel: Observer _____
 Src Chief _____
 Cable Truck _____
 Surveyors _____

Sketches

and

Remarks

File no.	SP no.	RSW no.	Station Location of				Remarks (Bad files, skips, reshoots, time, Powerlines, etc.)
			Tr 1	Tr 12	Tr 13	Tr 24	
776	701	14					
777	702	15					
778	703	16					
779	704	17					
780	705	18					
781	706	19					
782	707	20					
783	708	21					
784	709	22					
785	710	23					
786	711	24					
787	712	1	713	724	725	736	move truck 8:43AM
788	713	2					
789	714	3					9:00AM
790	715	4					
791	716	5					
792	717	6					
793	718	7					
794	719	8					
795	720	9					
796	721	10					
797	722	11					
798	723	12					
799	724	13					
800	725	14					
801	726	15					
802	727	16					
803	728	17					
804	729	18					9:10AM
805	730	19					
806	731	20					
807	732	21					
808	733	22					
809	734	23					
810	735	24					
811	736	1	737	748	749	760	move truck 9:13AM Air traffic

Line: Location _____ Station spacing _____ 1st station _____ Last station _____
 Direction _____ Topo Quad(s) _____ Road name/# _____ Surveyed? _____

Source: Type _____ # _____ Stack _____ Reiever: Type _____ Gph frq _____
 Array length/type _____ / _____ SP Interval _____ Group Interval _____ Gphs/group _____
 Gph Array Length/Type _____ / _____

Records: Length _____ Sample Rate _____ Personnel: Observer _____
 Hi cut filter _____ Low cut filter _____ Notch filter _____ Src Chief _____
 Conditions: Wind _____ Temp _____ Cable Truck _____
 Traffic _____ Moisture _____ Surveyors _____

Sketches
 and
 Remarks

File no.	SP no.	RSW no.	Station Location of				Remarks (Bad files, skips, reshoots, time, Powerlines, etc.)
			Tr 1	Tr 2	Tr 3	Tr 4	
812	736	1					
813	737	2					
814	738	3					
815	739	4					
816	740	5					
817	741	6					
818	742	7					
819	743	8					
820	744	9					
821	745	10					
822	746	11					
823	747	12					
824	748	13					
825	749	14					
826	750	15					
827	751	16					
828	752	17					
829	753	18					
830	754	19					
831	755	20					
832	756	21					
833	757	22					
834	758	23					
835	759	24					
836	760	1	761	772	773	784	end tape 049618 move truck 9:57 AM start tape 049619 p/p errors
837	761	2					
838	762	3					
839	763	4					
840	764	5					10:18 AM
841	765	6					
842	766	7					
843	767	8					
844	768	9					
845	769	10					
846	770	11					
847	771	12					
848	772	13					

Line: Location _____ Station spacing _____ 1st station _____ Last station _____
 Direction _____ Topo Quad(s) _____ Road name/# _____ Surveyed? _____

Source: Type _____ # _____ Stack _____ Reiever: Type _____ Gph frq _____
 Array length/type _____ / _____ SP Interval _____ Group Interval _____ Gphs/group _____
 Gph Array Length/Type _____ / _____

Records: Length _____ Sample Rate _____ Personnel: Observer _____
 Hi cut filter _____ Low cut filter _____ Notch filter _____ Src Chief _____
 Conditions: Wind _____ Temp _____ Cable Truck _____
 Traffic _____ Moisture _____ Surveyors _____

Sketches
 and
 Remarks

File no.	SP no.	IRSW no.	Station Location of				Remarks (Bad files, skips, reshoots, time, Powerlines, etc.)
			Tr 1	Tr 2	Tr 3	Tr 4	
849	773	14					
850	774	15					
851	775	16					
852	776	17					
853	777	18					
854	778	19					
855	779	20					
856	780	21					
857	781	22					
858	782	23					
859	783	24					
860	784	1	785	796	797	808	main truck 10:31 AM
861	785	2					
862	786	3					
863	787	4					
864	788	5					
865	789	6					10:52 AM
866	790	7					
867	791	8					
868	792	9					
869	793	10					
870	794	11					
871	795	12					
872	796	13					
873	797	14					
874	798	15					
875	799	16					
876	800	17					
877	801	18					
878	802	19					
879	803	20					
880	804	21					
881	805	22					
882	806	23					
883	807	24					
884	808	1	809	820	821	832	main truck 11:02 AM

Line: Location _____ Station spacing _____ 1st station _____ Last station _____
 Direction _____ Topo Quad(s) _____ Road name/# _____ Surveyed? _____

Source: Type _____ # _____ Stack _____ Reiever: Type _____ Gph frq _____
 Array length/type _____ / _____ SP Interval _____ Group Interval _____ Gphs/group _____
 Gph Array Length/Type _____ / _____

Records: Length _____ Sample Rate _____ Personnel: Observer _____
 Hi cut filter _____ Low cut filter _____ Notch filter _____ Src Chief _____
 Conditions: Wind _____ Temp _____ Cable Truck _____
 Traffic _____ Moisture _____ Surveyors _____

Sketches

and

Remarks

File no.	SP no.	RSWI no.	Station Location of				Remarks (Bad files, skips, reshoots, time, Powerlines, etc.)
			Tr	Tr	Tr	Tr	
885	809	2					
886	810	3					
887	811	4					
888	812	5					
889	813	6					
890	814	7					
891	815	8					
892	816	9					
893	817	10					
894	818	11					
895	819	12					
896	820	13					
897	821	14					
898	822	15					
899	823	16					
900	824	17					
901	825	18					
902	826	19					
903	827	20					
904	828	21					
905	829	22					
906	830	23					
907	831	24					
908	832	1	833	844	845	856	move truck 11:37 AM
909	833	2					
910	834	3					
911	835	4					
912	836	5					
913	837	6					
914	838	7					
915	839	8					
916	840	9					
917	841	10					
918	842	11					
919	843	12					
920	844	13					
921	845	14					

Line: Location _____ Station spacing _____ 1st station _____ Last station _____
 Direction _____ Topo Quad(s) _____ Road name/# _____ Surveyed? _____

Source: Type _____ # _____ Stack _____ Reiever: Type _____ Gph frq _____
 Array length/type _____ / _____ SP Interval _____ Group Interval _____ Gphs/group _____
 Gph Array Length/Type _____ / _____

Records: Length _____ Sample Rate _____ Personnel: Observer _____
 Hi cut filter _____ Low cut filter _____ Notch filter _____ Src Chief _____
 Conditions: Wind _____ Temp _____ Cable Truck _____
 Traffic _____ Moisture _____ Surveyors _____

Sketches

and

Remarks

File no.	SP no.	RSW no.	Station Location of				Remarks (Bad files, skips, reshoots, time, Powerlines, etc.)
			Tr	Tr	Tr	Tr	
922	846	15					
923	847	16					
924	848	17					
925	849	18					
926	850	19					
927	851	20					
928	852	21					
929	853	22					
930	854	23					
931	855	24					end tape 049619 move trucks 12:16PM start tape 049620
932	856	1	857	868	869	880	
933	857	2					
934	858	3					
935	859	4					
936	860	5					
937	861	6					
938	862	7					
939	863	8					
940	864	9					
941	865	10					
942	866	11					
943	867	12					
944	868	13					
945	869	14					
946	870	15					
947	871	16					
948	872	17					
949	873	18					
950	874	19					
951	875	20					
952	876	21					
953	877	22					
954	878	23					
955	879	24					
956	880	1	881	892	893	904	move truck 12:59PM

Line: Location _____ Station spacing _____ 1st station _____ Last station _____
 Direction _____ Topo Quad(s) _____ Road name/# _____ Surveyed? _____

Source: Type _____ # _____ Stack _____ Receiver: Type _____ Gph frq _____
 Array length/type _____ / _____ SP Interval _____ Group Interval _____ Gphs/group _____
 Gph Array Length/Type _____ / _____

Records: Length _____ Sample Rate _____ Personnel: Observer _____
 Hi cut filter _____ Low cut filter _____ Notch filter _____ Src Chief _____
 Conditions: Wind _____ Temp _____ Cable Truck _____
 Traffic _____ Moisture _____ Surveyors _____

Sketches

and

Remarks

File no.	SP no.	RSW no.	Station Location of				Remarks (Bad files, skips, reshoots, time, Powerlines, etc.)
			Tr	Tr	Tr	Tr	
957	881	2					
958	882	3					
959	883	4					
960	884	5					
961	885	6					
962	886	7					
963	887	8					
964	888	9					Shot in "tar" soil.
965	889	10					" "
966	890	11					
967	891	12					False trigger
968	891	12					
969	892	13					
970	893	14					
971	894	15					
972	895	16					
973	896	17					
974	897	18					
975	898	19					
976	899	20					
977	900	21					
978	901	22					
979	902	23					
980	903	24					
981	904	1	905	916	912	928	move truck 1:51 PMZ
982	905	2					
983	906	3					
984	907	4					
985	908	5					
986	909	6					
987	910	7					
988	911	8					
989	912	9					
990	913	10					
991	914	11					
992	915	12					B/P errors
993	916	13					

Line: Location _____ Station spacing _____ 1st station _____ Last station _____
 Direction _____ Topo Quad(s) _____ Road name/# _____ Surveyed? _____

Source: Type _____ # _____ Stack _____ Reiever: Type _____ Gph frq _____
 Array length/type _____ / _____ SP Interval _____ Group Interval _____ Gphs/group _____
 Gph Array Length/Type _____ / _____

Records: Length _____ Sample Rate _____ Personnel: Observer _____
 Hi cut filter _____ Low cut filter _____ Notch filter _____ Src Chief _____
 Conditions: Wind _____ Temp _____ Cable Truck _____
 Traffic _____ Moisture _____ Surveyors _____

Sketches

and

Remarks

File no.	SP no.	RSWI no.	Station Location of				Remarks (Bad files, skips, reshoots, time, Powerlines, etc.)
			Tr	Tr	Tr	Tr	
994	917	14					False trigger B/P errors
995	917	14					B/P errors
996	918	15					B/P errors
997	919	16					
998	920	17					B/P errors
999	921	18					B/P errors
000	922	19					B/P
001	923	20					B/P
002	924	21					B/P
003	925	22					
004	926	23					Gopher hole next to shot?
005	927	24					B/P errors
006	928	1	929	940	941	952	move truck 8:25 AM
007	929	2					B/P
008	930	3					
009	931	4					
010	932	5					B/P
011	933	6					
012	934	7					B/P
013	935	8					B/P
014	936	9					B/P
015	937	10					B/P
016	938	11					B/P
017	939	12					B/P
018	940	13					B/P
019	941	14					B/P
020	942	15					B/P
021	943	16					B/P
022	944	17					B/P
023	945	18					B/P
024	946	19					B/P
025	947	20					B/P
026	948	21					B/P
027	949	22					B/P
028	950	23					B/P
029	951	24					B/P end tape 049620 move truck

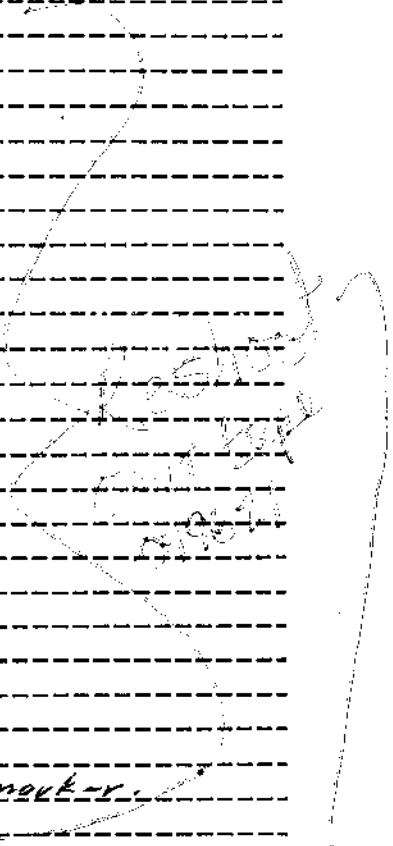
Line: Location _____ Station spacing _____ 1st station _____ Last station _____
 Direction _____ Topo Quad(s) _____ Road name/# _____ Surveyed? _____

Source: Type _____ # _____ Stack _____ Receiver: Type _____ Gph frq _____
 Array length/type _____ / _____ SP Interval _____ Group Interval _____ Gphs/group _____
 Gph Array Length/Type _____ / _____

Records: Length _____ Sample Rate _____ Personnel: Observer _____
 Hi cut filter _____ Low cut filter _____ Notch filter _____ Src Chief _____
 Conditions: Wind _____ Temp _____ Cable Truck _____
 Traffic _____ Moisture _____ Surveyors _____

Sketches
 and
 Remarks

File no.	SP no.	RSW no.	Station Location of				Remarks (Bad files, skips, reshoots, time, Powerlines, etc.)
			Tr	Tr	Tr	Tr	
							<i>start tape 049621</i>
030	952	1	953	964	965	976	
031	953	2					<i>B/P</i>
032	954	3					
033	955	4					
034	956	5					
035	957	6					<i>B/P</i>
036	958	7					<i>B/P</i>
037	959	8					<i>B/P</i>
038	960	9					<i>B/P</i>
039	961	10					<i>B/P</i>
040	962	11					<i>B/P</i>
041	963	12					<i>B/P</i>
042	964	13					<i>B/P</i>
043	965	14					<i>B/P</i>
044	966	15					<i>B/P</i>
045	967	16					<i>B/P</i>
046	968	17					<i>B/P</i>
047	969	18					<i>B/P</i>
048	970	19					<i>B/P</i>
049	971	20					<i>B/P</i>
050	972	21					<i>B/P</i>
051	973	22					<i>B/P</i>
052	974	23					<i>B/P Possible illegal EOF marker.</i>
053	975	24					<i>B/P</i>
054							<i>E.O.D. 3! dummy file to check system END 049621</i>
							<i>start 5-2-96 7:30 AM</i>
055	952	1	953	964	965	976	<i>start tape 059601</i>
057	954	3					<i>B/P</i>
058	955	4					
059	956	5					
060	957	6					
061	958	7					
062	959	8					
063	960	9					



Line: Location _____ Station spacing _____ 1st station _____ Last station _____
 Direction _____ Topo Quad(s) _____ Road name/# _____ Surveyed? _____

Source: Type _____ # _____ Stack _____ Reiever: Type _____ Gph frq _____
 Array length/type _____ / _____ SP Interval _____ Group Interval _____ Gphs/group _____
 Gph Array Length/Type _____ / _____

Records: Length _____ Sample Rate _____ Personnel: Observer _____
 Hi cut filter _____ Low cut filter _____ Notch filter _____ Src Chief _____
 Conditions: Wind _____ Temp _____ Cable Truck _____
 Traffic _____ Moisture _____ Surveyors _____

Sketches

and

Remarks

File no.	SP no.	IRSW no.	Station Location of				Remarks (Bad files, skips, reshoots, time, Powerlines, etc.)
			Tr	Tr	Tr	Tr	
064	961	10					
065	962	11					
066	963	12					
067	964	13					
068	965	14					
069	966	15					
070	967	16					
071	968	17					
072	969	18					
073	970	19					
074	971	20					
075	972	21					
076	973	22					
077	974	23					
078	975	24					
079	976	1	977	988	989	1000	max truck 8:13 AM.
080	977	2					
081	978	3					
082	979	4					
083	980	5					11:54 AM
084	981	6					
085	982	7					
086	983	8					
087	984	9					
088	985	10					
089	986	11					
090	987	12					
091	988	13					
092	989	14					
093	990	15					
094	991	16					
095	992	17					
096	993	18					
097	994	19					
098	995	20					
099	996	21					
100	997	22					file number on top - may be wrong.

Line: Location _____ Station spacing _____ 1st station _____ Last station _____
 Direction _____ Topo Quad(s) _____ Road name/# _____ Surveyed? _____

Source: Type _____ # _____ Stack _____ Receiver: Type _____ Gph frq _____
 Array length/type _____ / _____ SP Interval _____ Group Interval _____ Gphs/group _____
 Gph Array Length/Type _____ / _____

Records: Length _____ Sample Rate _____ Personnel: Observer _____
 Hi cut filter _____ Low cut filter _____ Notch filter _____ Src Chief _____
 Conditions: Wind _____ Temp _____ Cable Truck _____
 Traffic _____ Moisture _____ Surveyors _____

Sketches

and

Remarks

File no.	SP no.	RSW no.	Station Location of				Remarks (Bad files, skips, reshoots, time, Powerlines, etc.)
			Tr	Tr	Tr	Tr	
101	998	23					
102	999	24					B/P errors move truck 12:06 PM
103	1000	1	1001	1012	1013	1024	
104	1001	2					
105	1002	3					
106	1003	4					12:23 PM
107	1004	5					
108	1005	6					
109	1006	7					
110	1007	8					
111	1008	9					
112	1009	10					
113	1010	11					
114	1011	12					
115	1012	13					
116	1013	14					
117	1014	15					
118	1015	16					
119	1016	17					
120	1017	18					
121	1018	19					
122	1019	20					
123	1020	21					
124	1021	22					B/P errors
125	1022	23					
126	1023	24					move truck 12:34 PM
127	1024	1	1025	1036	1037	1048	B/P errors
128	1025	2					
129	1026	3					
130	1027	4					
131	1028	5					
132	1029	6					
133	1030	7					
134	1031	8					
135	1032	9					
136	1033	10					

Line: Location _____ Station spacing _____ 1st station _____ Last station _____
 Direction _____ Topo Quad(s) _____ Road name/# _____ Surveyed? _____

Source: Type _____ # _____ Stack _____ Reveiver: Type _____ Gph frq _____
 Array length/type _____ / _____ SP Interval _____ Group Interval _____ Gphs/group _____
 Gph Array Length/Type _____ / _____

Records: Length _____ Sample Rate _____ Personnel: Observer _____
 Hi cut filter _____ Low cut filter _____ Notch filter _____ Src Chief _____
 Conditions: Wind _____ Temp _____ Cable Truck _____
 Traffic _____ Moisture _____ Surveyors _____

Sketches

and

Remarks

File no.	SP no.	RSW no.	Tr	Station Location of				Remarks (Bad files, skips, reshoots, time, Powerlines, etc.)
				Tr	Tr	Tr	Tr	
137	1034	11						
138	1035	12						
139	1036	13						
140	1037	14						
141	1038	15						
142	1039	16						
143	1040	17						
144	1041	18						
145	1042	19						
146	1043	20						
147	1044	21						
148	1045	22						
149	1046	23						
150	1047	24						end tape 059601 move truck
151	1048	1	1049	1060	1061	1072		start tape 059602
152	1049	2						
153	1050	3						
154	1051	4						B/P errors
155	1052	5						
156	1053	6						
157	1054	7						
158	1055	8						
159	1056	9						
160	1057	10						
161	1058	11						
162	1059	12						
163	1060	13						
164	1061	14						
165	1062	15						
166	1063	16						
167	1064	17						
168	1065	18						
169	1066	19						
170	1067	20						
171	1068	21						
172	1069	22						
173	1070	23						

Line: Location _____ Station spacing _____ 1st station _____ Last station _____
 Direction _____ Topo Quad(s) _____ Road name/# _____ Surveyed? _____

Source: Type _____ # _____ Stack _____ Receiver: Type _____ Gph frq _____
 Array length/type _____ / _____ SP Interval _____ Group Interval _____ Gphs/group _____
 Gph Array Length/Type _____ / _____

Records: Length _____ Sample Rate _____ Personnel: Observer _____
 Hi cut filter _____ Low cut filter _____ Notch filter _____ Src Chief _____
 Conditions: Wind _____ Temp _____ Cable Truck _____
 Traffic _____ Moisture _____ Surveyors _____

Sketches
 and
 Remarks

File no.	SP no.	RSW no.	Station Location of				Remarks (Bad files, skips, reshoots, time, Powerlines, etc.)
			Tr 1	Tr	Tr	Tr 24	
283	1178	11					
284	1179	12					
285	1180	13					
286	1181	14					
287	1182	15					
288	1183	16					blowout?
289	1184	17					blowout bottom of array
290	1185	18					
291	1186	19					
292	1187	20					
293	1188	21					
294	1189	22					
295	1190	23					
296	1191	24					
297	1192	1	1193	1204	1205	1216	more trucks 8:08 AM WJS OBSERVING
298	1193	2					
299	1194	3					
300	1195	4					
301	1196	5					
302	1197	6					
303	1198	7					
304	1199	8					
305	1200	9					
306	1201	10					
307	1202	11					
308	1203	12					
309	1204	13					
310	1205	14					
311	1206	15					
312	1207	16					
313	1208	17					
314	1209	18					
315	1210	19					
316	1211	20					
317	1212	21					
318	1213	22					
319	1214	23					

Line: Location _____ Station spacing _____ 1st station _____ Last station _____
 Direction _____ Topo Quad(s) _____ Road name/# _____ Surveyed? _____

Source: Type _____ # _____ Stack _____ Receiver: Type _____ Gph frq _____
 Array length/type _____ / _____ SP Interval _____ Group Interval _____ Gphs/group _____
 Gph Array Length/Type _____ / _____

Records: Length _____ Sample Rate _____ Personnel: Observer _____
 Hi cut filter _____ Low cut filter _____ Notch filter _____ Src Chief _____
 Conditions: Wind _____ Temp _____ Cable Truck _____
 Traffic _____ Moisture _____ Surveyors _____

Sketches

and

Remarks

File no.	SP no.	RSW no.	Station Location of				Remarks (Bad files, skips, reshoots, time, Powerlines, etc.)
			Tr	Tr	Tr	Tr	
320	1215	24					
321	1216	1	1217	1228	1229	1240	move truck 8:45am
322	1217	2					
323	1218	3					
324	1219	4					
325	1220	5					
326	1221	6					
327	1222	7					
328	1223	8					
329	1224	9					
330	1225	10					
331	1226	11					
332	1227	12					
333	1228	13					
334	1229	14					
335	1230	15					
336	1231	16					
337	1232	17					
338	1233	18					
339	1234	19					
340	1235	20					
341	1236	21					
342	1237	22					
343	1238	23					
344	1239	24					end tape 059603 truck move 9:31AM
345	1240	1	1241	1252	1253	1264	start tape 059604
346	1241	2					
347	1242	3					
348	1243	4					
349	1244	5					
350	1245	6					
351	1246	7					
352	1247	8					
353	1248	9					
354	1249	10					
355	1250	11					

Line: Location _____ Station spacing _____ 1st station _____ Last station _____
 Direction _____ Topo Quad(s) _____ Road name/# _____ Surveyed? _____

Source: Type _____ # _____ Stack _____ Receiver: Type _____ Gph frq _____
 Array length/type _____ / _____ SP Interval _____ Group Interval _____ Gphs/group _____
 Gph Array Length/Type _____ / _____

Records: Length _____ Sample Rate _____ Personnel: Observer _____
 Hi cut filter _____ Low cut filter _____ Notch filter _____ Src Chief _____
 Conditions: Wind _____ Temp _____ Cable Truck _____
 Traffic _____ Moisture _____ Surveyors _____

Sketches
 and
 Remarks

File no.	SP no.	RSW no.	Station Location of				Remarks (Bad files, skips, reshoots, time, Powerlines, etc.)
			Tr	Tr	Tr	Tr	
356	1251	12					
357	1252	13					
358	1253	14					
359	1254	15					
360	1255	16					
361	1256	17					
362	1257	18					
363	1258	19					
364	1259	20					
365	1260	21					
366	1261	22					
367	1262	23					
368	1263	24					
369	1264	1	1265	1276	1277	1288	move truck 10:02 AM 10:29 AM
370	1265	2					
371	1266	3					
372	1267	4					
373	1268	5					
374	1269	6					
375	1270	7					
376	1271	8					
377	1272	9					
378	1273	10					
379	1274	11					
380	1275	12					
381	1276	13					
382	1277	14					
383	1278	15					
384	1279	16					
385	1280	17					
386	1281	18					
387	1282	19					
388	1283	20					
389	1284	21					
390	1285	22					
391	1286	23					
392	1287	24					10:41 AM

Line: Location _____ Station spacing _____ 1st station _____ Last station _____
 Direction _____ Topo Quad(s) _____ Road name/# _____ Surveyed? _____

Source: Type _____ # _____ Stack _____ Receiver: Type _____ Gph frq _____
 Array length/type _____ / _____ SP Interval _____ Group Interval _____ Gphs/group _____
 Gph Array Length/Type _____ / _____

Records: Length _____ Sample Rate _____ Personnel: Observer _____
 Hi cut filter _____ Low cut filter _____ Notch filter _____ Src Chief _____
 Conditions: Wind _____ Temp _____ Cable Truck _____
 Traffic _____ Moisture _____ Surveyors _____

Sketches

and

Remarks

File no.	SP no.	RSWI no.	Station Location of				Remarks (Bad files, skips, reshoots, time, Powerlines, etc.)
			Tr	Tr	Tr	Tr	
393	1288	1	1289	1300	1301	1312	move truck 10:42 AM
394	1289	2					switch to hammer on asphalt.
395	1290	3					
396	1291	4					false trigger
397							reshoot
398	1292	5					
399	1293	6					
400	1294	7					
401	1295	8					
402	1296	9					
403	1297	10					
404	1298	11					
405	1299	12					
406	1300	13					
407	1301	14					
408	1302	15					
409	1303	16					
410	1304	17					switch to 12 ga.
411	1305	18					blowout
412	1306	19					
413	1307	20					
414	1308	21					
415	1309	22					
416	1310	23					
417	1311	24					
418	1312	1	1313	1324	1325	1326	move truck 11:24 AM
419	1313	2					
420	1314	3					
421	1315	4					
422	1316	5					
423	1317	6					
424	1318	7					
425	1319	8					
426	1320	9					
427	1321	10					
428	1322	11					

Line: Location _____ Station spacing _____ 1st station _____ Last station _____
 Direction _____ Topo Quad(s) _____ Road name/# _____ Surveyed? _____

Source: Type _____ # _____ Stack _____ Receiver: Type _____ Gph frq _____
 Array length/type _____ / _____ SP Interval _____ Group Interval _____ Gphs/group _____
 Gph Array Length/Type _____ / _____

Records: Length _____ Sample Rate _____ Personnel: Observer _____
 Hi cut filter _____ Low cut filter _____ Notch filter _____ Src Chief _____
 Conditions: Wind _____ Temp _____ Cable Truck _____
 Traffic _____ Moisture _____ Surveyors _____

Sketches
 and
 Remarks

File no.	SP no.	RSW no.	Station Location of				Remarks (Bad files, skips, reshoots, time, Powerlines, etc.)
			Tr	Tr	Tr	Tr	
429	1323	12					
430	1324	13					
431	1325	14					
432	1326	15					
433	1327	16					
434	1328	17					
435	1329	18					
436	1330	19					
437	1331	20					
438	1332	21					
439	1333	22					
440	1334	23					
441	1335	24					end tape 059604 move truck
442	1336	1	1337	1348	1349	1360	Source - at 1335 @ Perovars Windy. Start 059605.
443	1337	2					
444	1338	3					
445	1339	4					
446	1340	5					
447	1341	6					
448	1342	7					
449	1343	8					
450	1344	9					
451	1345	10					
452	1346	11					
453	1347	12					
454	1348	13					
455	1349	14					
456	1350	15					
457	1351	16					
458	1352	17					
459	1353	18					
460	1354	19					
461	1355	20					
462	1356	21					
463	1357	22					
464	1358	23					
465	1359	24					

Line: Location _____ Station spacing 2 m 1st station _____ Last station _____
 Direction _____ Topo Quad(s) _____ Road name/# _____ Surveyed? _____

Source: Type _____ # _____ Stack _____ Receiver: Type _____ Gph frq _____
 Array length/type _____ / _____ SP Interval _____ Group Interval _____ Gphs/group _____
 Gph Array Length/Type _____ / _____

Records: Length _____ Sample Rate _____ Personnel: Observer _____
 Hi cut filter _____ Low cut filter _____ Notch filter _____ Src Chief _____
 Conditions: Wind _____ Temp _____ Cable Truck _____
 Traffic _____ Moisture _____ Surveyors _____

Sketches

and

Remarks

File no.	SP no.	RSW no.	Tr 1	Tr 12	Tr 13	Tr 24	Station Location of	Remarks (Bad files, skips, reshoots, time, Powerlines, etc.)
1 466	1360	1	1361	1372	1373	1384		move truck 12:51 PM WTS OBSERVER B/P ERRORS
467	1361	2						
468	1362	3						
469	1363	4						
470	1364	5						
471	1365	6						
472	1366	7						
473	1367	8						
474	1368	9						
475	1369	10						
476	1370	11						
477	1371	12						
478	1372	13						
479	1373	14						
480	1374	15						
481	1375	16						
482	1376	17						
483	1377	18						
484	1378	19						
485	1379	20						
486	1380	21						
487	1381	22						
488	1382	23						
489	1383	24						
490	1384	1	1385	1396	1397	1408		move TRUCK 1:30 PM
491	1385	2						
492	1386	3						
493	1387	4						
494	1388	5						Very loud report from source.
495	1389	6						
496	1390	7						
497	1391	8						
498	1392	9						
499	1393	10						
500	1394	11						
501	1395	12						

Project _____ Line _____ Date _____ Tape # _____ Page # 44 of _____
 Line: Location _____ Station spacing _____ 1st station _____ Last station _____
 Direction _____ Topo Quad(s) _____ Road name/# _____ Surveyed? _____
 Source: Type _____ # _____ Stack _____ Receiver: Type _____ Gph frq _____
 Array length/type _____ / _____ SP Interval _____ Group Interval _____ Gphs/group _____
 Gph Array Length/Type _____ / _____
 Records: Length _____ Sample Rate _____ Personnel: Observer _____
 Hi cut filter _____ Low cut filter _____ Notch filter _____ Src Chief _____
 Conditions: Wind _____ Temp _____ Cable Truck _____
 Traffic _____ Moisture _____ Surveyors _____

Sketches _____
 and _____
 Remarks _____

File no.	SP no.	RSW no.	Tr	Station Location of				Remarks (Bad files, skips, reshoots, time, Powerlines, etc.)
				Tr	Tr	Tr	Tr	
502	1396	13						
503	1397	14						
504	1398	15						
505	1399	16						
506	1400	17						
507	1401	18						
508	1402	19						
509	1403	20						
510	1404	21						
511	1405	22						
512	1406	23						
513	1407	24						
514	1408	1	1409	1420	1421	1432		move truck 1:54 PM 2:09 PM
515	1409	2						truck moving on line
516	1410	3						
517	1411	4						
518	1412	5						
519	1413	6						
520	1414	7						
521	1415	8						
522	1416	9						
523	1417	10						b/p errors
524	1418	11						
525	1419	12						
526	1420	13						
527	1421	14						
528	1422	15						
529	1423	16						
530	1424	17						
531	1425	18						
532	1426	19						
533	1427	20						
534	1428	21						
535	1429	22						
536	1430	23						
537	1431	24						end 059605 move truck 2:25 PM

Line: Location _____ Station spacing _____ 1st station _____ Last station _____
 Direction _____ Topo Quad(s) _____ Road name/# _____ Surveyed? _____

Source: Type _____ # _____ Stack _____ Receiver: Type _____ Gph frq _____
 Array length/type _____ / _____ SP Interval _____ Group Interval _____ Gphs/group _____
 Gph Array Length/Type _____ / _____

Records: Length _____ Sample Rate _____ Personnel: Observer _____
 Hi cut filter _____ Low cut filter _____ Notch filter _____ Src Chief _____
 Conditions: Wind _____ Temp _____ Cable Truck _____
 Traffic _____ Moisture _____ Surveyors _____

Sketches

and

Remarks

File no.	SP no.	RSW no.	Station Location of				Remarks (Bad files, skips, reshoots, time, Powerlines, etc.)
			Tr 1	Tr 12	Tr 13	Tr 24	
538	1432	1	1433	1444	1445	1456	start 059606
539	1433	2					false trigger
540							reshoot
541	1434	3					
542	1435	4					
543	1436	5					
544	1437	6					2:47 PM
545	1438	7					
546	1439	8					
547	1440	9					
548	1441	10					
549	1442	11					
550	1443	12					
551	1444	13					
552	1445	14					
553	1446	15					
554	1447	16					
555	1448	17					
556	1449	18					
557	1450	19					
558	1451	20					
559	1452	21					
560	1453	22					
561	1454	23					
562	1455	24					
563	1456	1	1457	1468	1469	1480	more truck 0:10 - 0:20 3:21 PM
564	1457	2					
565	1458	3					
566	1459	4					
567	1460	5					
568	1461	6					
569	1462	7					
570	1463	8					
571	1464	9					
572	1465	10					
573	1466	11					
574	1467	12					

Line: Location _____ Station spacing _____ 1st station _____ Last station 1509
 Direction _____ Topo Quad(s) _____ Road name/# _____ Surveyed? _____

Source: Type _____ # _____ Stack _____ Receiver: Type _____ Gph frq _____
 Array length/type _____ / _____ SP Interval _____ Group Interval _____ Gphs/group _____
 Gph Array Length/Type _____ / _____

Records: Length _____ Sample Rate _____ Personnel: Observer _____
 Hi cut filter _____ Low cut filter _____ Notch filter _____ Src Chief _____
 Conditions: Wind _____ Temp _____ Cable Truck _____
 Traffic _____ Moisture _____ Surveyors _____

Sketches _____
 and _____
 Remarks _____

File no.	SP no.	RSW no.	Station Location of				Remarks (Bad files, skips, reshoots, time, Powerlines, etc.)
			Tr	Tr	Tr	Tr	
575	1468	13					
576	1469	14					
577	1470	15					
578	1471	16					
579	1472	17					
580	1473	18					
581	1474	19					
582	1475	20					
583	1476	21					
584	1477	22					
585	1478	23					
586	1479	24					
587	1480	1	1481	1492	1493	1504	man = truck 3:34 PM Roll switch at 2? Roll switch at 3? Roll switch okay.
588	1481	2					
589	1482	3					
590	1483	4					
591	1484	5					
592	1485	6					
593	1486	7					begin roll off
594	1487	8					
595	1488	9					
596	1489	10					
597	1490	11					
598	1491	12					
599	1492	13					
600	1493	14					file number on tape is 500
601	1494	15					
602	1495	16					
603	1496	17					
604	1497	18					
605	1498	19					
606	1499	20					
607	1500	21					
608	1501	22					
609	1502	23					
610	1503	24					
611	1504	25					End 059606, END OF LINE, END 5-3-96 4:10 PM